



# THE GETTY VOCABULARIES AND LINKED OPEN DATA: INTRODUCTION AND EDITORIAL PERSPECTIVE

revised September 2014

Patricia Harpring  
Managing Editor, Getty Vocabulary Program

# Table of Contents



- What are the Getty vocabularies?
- Scope and content of the Getty vocabularies
- Getty vocabularies to LOD: Editorial perspective
- What is LOD? In brief.

[www.getty.edu/research/tools/vocabularies/index.html](http://www.getty.edu/research/tools/vocabularies/index.html)

# What Are the Getty Vocabularies?

AAT TGN ULAN CONA



# The Getty Vocabularies

Discover, link, access, retrieve, research, catalogue, index  
Explore art, architecture, cultural heritage, conservation, archaeology, and beyond



## What are the Getty vocabularies?

- *Catherine wheel* or *rose window*? *Mona Lisa* or *La Gioconda*?
- The AAT, TGN, ULAN and CONA contain multilingual terminology and other related data to describe
  - visual art, architecture, other cultural heritage works, conservation, archaeology, archival materials, visual surrogates, and related bibliographic materials

# The Getty Vocabularies

Discover, link, access, retrieve, research, catalogue, index

Explore art, architecture, cultural heritage, conservation, archaeology, and beyond

- Getty vocabularies are valued as authoritative
  - Grow through contributions from experts
  - Contributors and sources are cited
- Compiled, merged, edited, and published by the Getty Vocabulary Program and our talented, tireless technical team
- **Data is made available in various ways:** via online searching; relational tables, XML format, Web services APIs
  - **Now as Linked Open Data:** structured and published to make it openly accessible and shareable on the Semantic Web
    - **Open Data Commons Attribution License (ODC-By) v1.0**
    - Allows sharing, creation, adaptation of data with attribution



# The Getty Vocabularies

Discover, link, access, retrieve, research, catalogue, index  
Explore art, architecture, cultural heritage, conservation, archaeology, and beyond

## How can the Getty vocabularies be obtained?

- Consult the vocabularies on the Getty Web site, free of charge, by searching individual terms and names
- Raw data files may be licensed from the Getty in relational tables and XML format and through Web services APIs

Union List of Artist Names® Online

Search the ULAN [? Help](#)

Find Name or ID:  [Search](#)

Role:  [Clear](#)

[Lookup](#)

Nationality:

[Lookup](#)

[Pop-up Search](#) [Browse the ULAN hierarchies](#)



# The Getty Vocabularies

Discover, link, access, retrieve, research, catalogue, index  
Explore art, architecture, cultural heritage, conservation, archaeology, and beyond

## Search Tools & Databases

- Primo Search
- ▶ Getty Research Portal
- Collection Inventories & Finding Aids
- ▶ Photo Archive
- ▶ Research Guides & Bibliographies
- Digital Collections
- ▶ Article & Research Databases
- ▶ Collecting & Provenance Research
- BHA & RILA
- ▼ Getty Vocabularies
  - ▶ Art & Architecture Thesaurus (AAT) ®
  - ▶ Cultural Objects Name Authority (CONA) ®
  - ▶ Getty Thesaurus of Geographic Names (TGN) ®
  - ▶ Union List of Artist Names (ULAN) ®
  - Contribute
  - Editorial Guidelines
  - Getty Vocabularies as Linked Open Data
  - Frequently Asked Questions

## Getty Vocabularies as Linked Open Data

The Getty vocabularies are constructed to allow their use in linked data. A project to publish AAT, TGN, ULAN, and CONA to the LOD (Linked Open Data) cloud is underway. The documents on this page contain news and presentations about releasing the Getty vocabularies as LOD. These materials are subject to frequent modification and addition.



- [News and Status of the Project](#)
- [What Is LOD?](#)
- [Introduction to Getty Vocabularies](#)
- [Linked Open Data Flier](#) (PDF, 1 M)
- [List of External Advisors](#) (PDF, 88 K)

The AAT and TGN are now available as [linked data](#) under the [Creative Commons Attribution 3.0 license](#).

- [Developers and programmers, technical documentation to help you explore the AAT and TGN data is available at the SPARQL endpoint at \[vocab.getty.edu\]\(http://vocab.getty.edu\)](#)

- **Linked Open Data:** AAT, TGN, ULAN, and CONA will be released sequentially as Linked Open Data (LOD) through 2015
- AAT and TGN were released in 2014, published in SKOS and SKOS-XL formats under the ODC-BY 1.0 license

# The Getty Vocabularies

Discover, link, access, retrieve, research, catalogue, index

Explore art, architecture, cultural heritage, conservation, archaeology, and beyond

- Getty vocabularies are thesauri compliant with national (NISO) and international (ISO) standards for thesaurus construction
- They are compliant with / map to other standards:
  - CDWA (Categories for the Description of Works of Art)
  - CCO (Cataloging Cultural Objects)
  - VRA Core (Visual Resources Association core categories)
  - LIDO (Lightweight Information Describing Objects)
  - CIDOC CRM (CIDOC Conceptual Reference Model) (ISO 21127:2006)
  - etc.



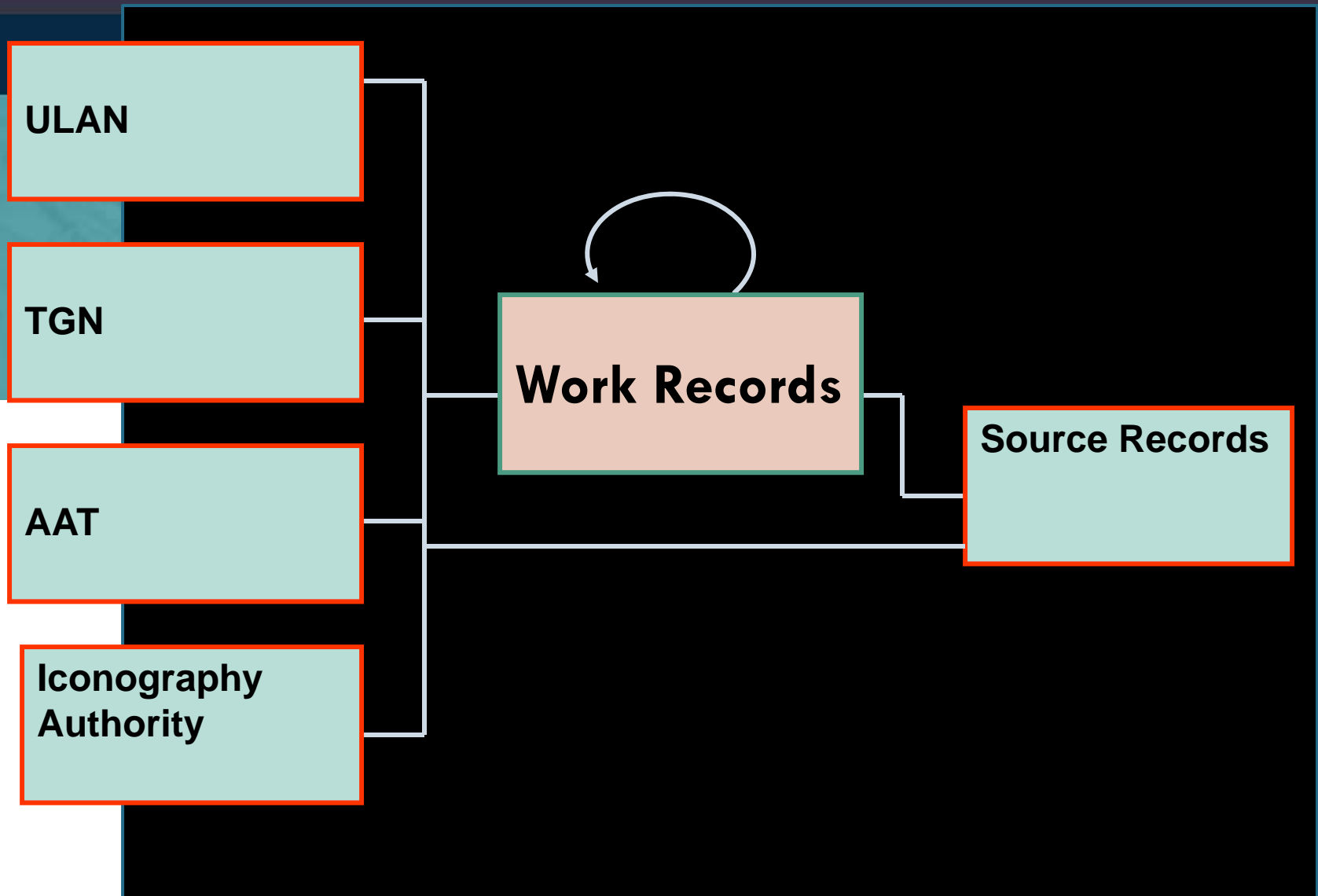
# The Getty Vocabularies

Discover, link, access, retrieve, research, catalogue, index

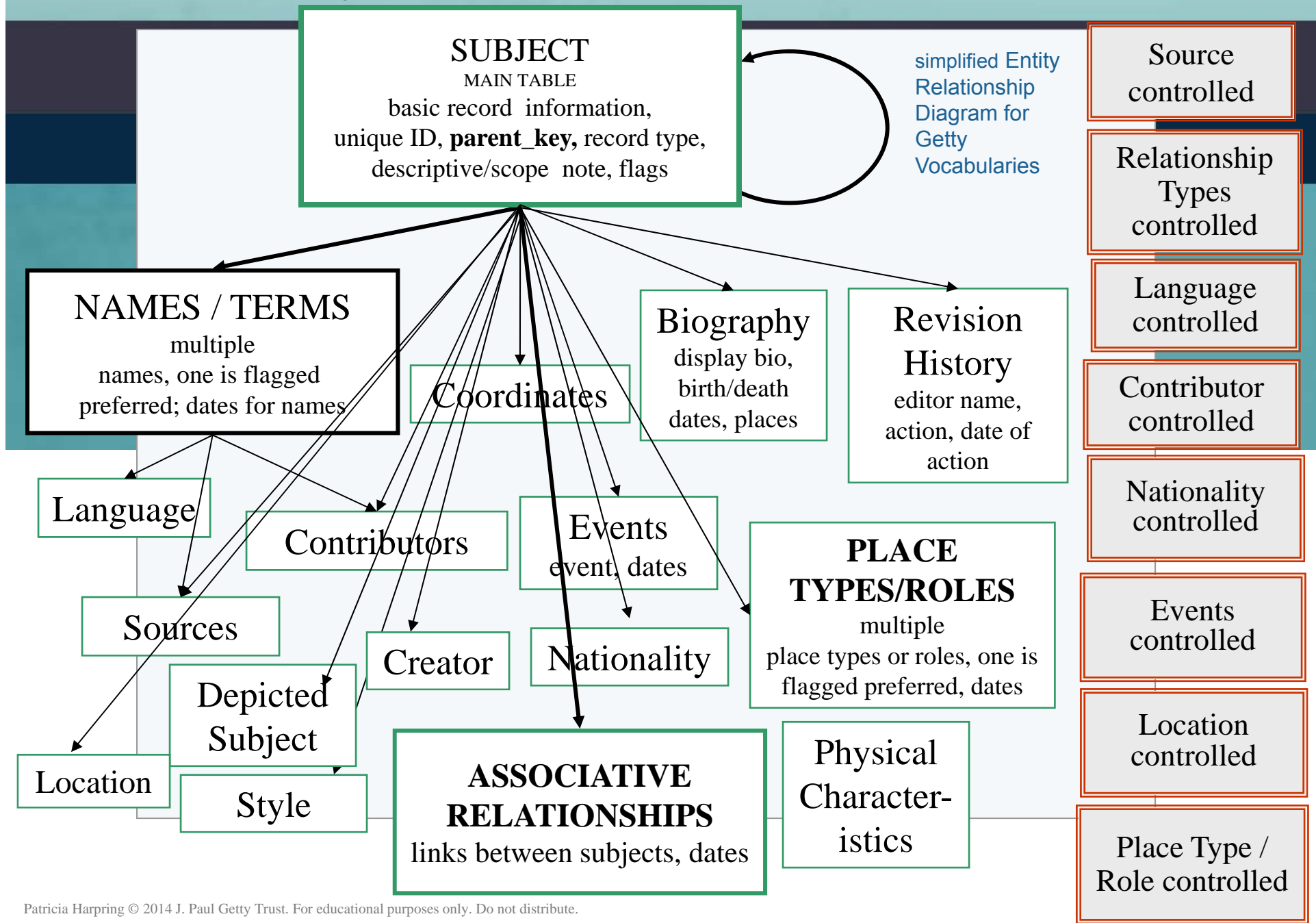
Explore art, architecture, cultural heritage, conservation, archaeology, and beyond

- Among the features that allow the Getty vocabularies to be used in cataloging, retrieval, and linking are the following:
  - Each Getty vocabulary records and terms are identified by **unique numeric IDs**
  - The Getty vocabularies are linked to each other
  - The Getty vocabularies share a core data structure

# The Getty vocabularies are linked to each other



# The Getty vocabularies share a core data structure



# The Getty Vocabularies

Discover, link, access, retrieve, research, catalogue, index  
Explore art, architecture, cultural heritage, conservation, archaeology, and beyond

## The LOD Team

- The majority of the work is being done by our in-house team, but we have established an open community and welcome collaboration:  
*vocabLOD@getty.edu*

- **The team**

***Getty ITS***

Joan Cobb

Gregg Garcia

***Outside consultant, Ontotext***

Vladimir Alexiev

***Getty Vocabulary Program (GRI)***

Patricia Harpring, Jon Ward, Antonio Beecroft, Robin Johnson

***ITS and GRI joint LOD steering committee***

Murtha Baca, David Farneth, Joe Shubitowski, Mike Clardy, Marilyn Gillette, Joan Cobb, Gregg Garcia, Patricia Harpring

***External Advisors (see list on our LOD page)***

# How are vocabularies used?

**Record Type:** item

**Object Type:** **watercolor** (AAT)

**Title:** Henderson as Falstaff

**Creator Display:** Victor Moblard (American, born 1851 in Sweden), after an etching by John Kay (British caricaturist, 1742-1826)

**Related People:** **artist:** **Victor Moblard** (ULAN)

**artist:** **John Kay** (work depicted) (ULAN)

**Materials and Techniques:** drawing, watercolor on wove paper

**Terms:** **drawing** (AAT) ; **watercolor** (AAT) ; **wove paper** (AAT)

**Dimensions:** 14 x 9 1/2 inches

**Date of Creation:** late 19th century

**Inscription:** below figure: HENDERSON as FALSTAFF. / "I never see thy nose, but I think upon hellfire." / Kay fec 1785

← (TGN)

**Locations:** **current:** **Folger Shakespeare Library (Washington, DC, USA)** (ULAN)

**address note:** ART Box M785 no.3 (size L)

**ID:** Hamnet Holdings ID: 337094

**Provenance:** former owner: Toedteberg, Augustus, 1823-1826

**Subjects:** **literary theme** (general); **portrait** (general)

**Falstaff, John, Sir (fictional character)** (IA)

**man (male human)** (AAT) ; **Henderson, John (British actor, 1747-1785)** (ULAN)

**Note:** Kay's depiction may refer to a provincial performance of the play ...

**Sources:** Folger Shakespeare Library [online]

- Various fields in a work record are controlled by vocabularies
- The work record itself could be contributed to CONA
- Getty vocabularies may be linked to others (VIAF, GIS, etc.)





# Scope and Content of the Getty Vocabularies

AAT

TGN

ULAN

CONA



amfoor

amphorae

arc-boutant

brittleness

Buddhism

calligraphy

emulsifier

façades

flying buttress

飛扶壁

lithographer

litógrafos

luchtbogen

orthogonal plan

Macedonian

millwork

Rinascimento

stupa

Sturzbecher

travertine

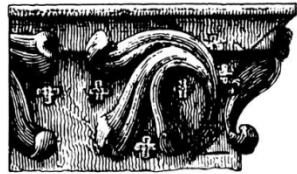
weft wrapping

yastiks

zeppelin

Zigula

zinc oxide



## AAT, the Art & Architecture Thesaurus®

Generic terms for describing art and architecture (decorative arts, other material culture, visual surrogates, archival materials, archaeology, and conservation) (e.g., *oil paintings, Baroque, lithographers, sintering*).

Current totals: 36,000 records; 245,000 terms

- AAT is multilingual; large translation projects are underway
- Conceptually organized from terms to describe abstract concepts to generic terms for concrete, physical artifacts
- Facets are the upper levels of the AAT structure
- AAT is not organized by subject matter or discipline

*Associated  
Concepts*

*Physical  
Attributes*

*Styles and  
Periods*

*Agents*

*Activities*

*Materials*

*Objects*



**Thesaural relationships**

*hierarchical*

Objects Facet  
 .... Furnishings and Equipment  
 ..... Containers  
 ..... culinary containers  
 ..... <vessels for serving / consuming food  
 .....

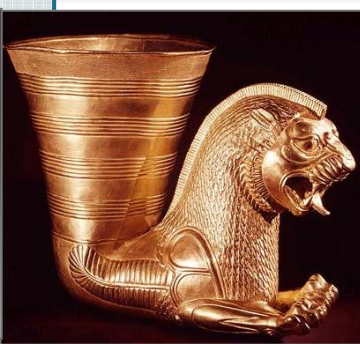
**stirrup cups**  
**coaching glasses**  
**hunting glasses**

*associative*

**sturzbechers**  
**Sturzbecher**  
**stortebekers**

**distinguished from**

**rhyta** *equivalence*  
 rhyton  
 rhytons  
 rhea  
 rheon  
 rheons  
 ritón







# AAT, the Art & Architecture Thesaurus®

## Sample record

**ID:** 300132869

**Terms:**

bobbin lace (pref, en)  
 bone lace (en)  
 cushion lace (en)  
 梭心蕾絲 (zh)  
 線軸編織花邊 (zh)  
 kloskant (nl)  
 dentelle aux fuseaux (fr)  
 encaje de bolillos (es)  
 encaje de bolillo (es)  
 Klöppelspitze (de)  
 Klöppelspitzen (de)

**Associative Relationships**

requires ... lace pillows (<textile fabricating tools and equipment>...Objects Facet) [300132869]

**Hierarchical Relationships (poly)**

.Objects Facet  
 ... Visual & Verbal Communication  
 ..... Visual Works  
 ..... visual works (works)  
 ..... <visual works by material >  
 ..... needlework (visual works)  
 ..... lace (needlework)  
 ..... bobbin lace

**Note:** With "needle lace," one of two primary types of handmade lace. It is characterized by being made by ...

**Chinese (traditional)** ..... 與「針織蕾絲 (needle lace)」同為主要的手工蕾絲, 其特色是以纏繞於線軸或梭心...

**Dutch** ..... Een van de twee belangrijkste soorten met de hand vervaardigde kant; 'naaldkant' is ...

**German** ..... Zusammen mit der "Nadelspitze" eine der wichtigsten...

**Spanish** ..... Junto a "encaje a aguja", uno de los dos tipos principales de ...

**Contributors:** VP,CHIN,AS,RKD,lFM-SMB-PK,CDPB-DIBAM

**Sources:** Earnshaw, Claburn, Needleworker's Dictionary (1976); Identification of Lace, 2d ed. (1984); Ginsburg, Illustrated History of Textiles (1991)

Translations are underway

Research  
Research Home ▶ Tools ▶ Art & Architecture Thesaurus ▶ Full Record Display  
Art & Architecture Thesaurus® Online  
Full Record Display  
New Search Previous Page  
Semantic View (JSON, RDF, N3/Turtle, N-Triples)

bobbin lace ([preferred](#), [C,U,LC,English-P,D,U](#),  
bone lace ([C,U,English,UF,U,N](#))  
cushion lace ([C,U,English,UF,U,N](#))  
lace, bobbin ([C,U,English,UF,U,N](#))  
pillow lace ([C,U,English,UF,U,N](#))  
梭心蕾絲 ([C,U,Chinese \(traditional\)-P,D,U,U](#))  
線軸編織花邊 ([C,U,Chinese \(traditional\),UF,U,U](#))  
骨架花邊 ([C,U,Chinese \(traditional\),UF,U,U](#))  
枕墊花邊 ([C,U,Chinese \(traditional\),UF,U,U](#))  
suō xīn lěi sī ([C,U,Chinese \(transliterated Han\)](#))  
suo xin lei si ([C,U,Chinese \(transliterated Piny\)](#))  
so hsin lei ssu ([C,U,Chinese \(transliterated Wa](#))  
kloskant ([C,U,Dutch-P,D,U,U](#))  
dentelle aux fuseaux ([C,U,French-P,D,U,PN](#))  
merletto a tombolo ([C,U,Italian-P,D,U,PN](#))  
encaje de bolillos ([C,U,Spanish-P,D,U,PN](#))  
encaje de bolillo ([C,U,Spanish,AD,U,SN](#))  
Klöppelspitze ([C,U,German,AD,U,SN](#))  
Klöppelspitzen ([C,U,German-P,D,U,PN](#))  
Klöppeispitzen ([C,U,German-P,D,U,PN](#))

- **Getty Conservation Institute** (Los Angeles, California)
- **Academia Sinica** (Nankang, Taiwan)
- **Netherlands Institute for Art History** (RKD: Bureau AAT) (The Hague, The Netherlands)
- **Centro de Documentación de Bienes Patrimoniales** (Dirección de Bibliotecas, Archivos y Museos) (Santiago, Chile)
- **Staatliche Museen zu Berlin Preussischer Kulturbesitz** (Berlin, Germany)
- *[Canadian Heritage Information Network (CHIN) (Gatineau, Quebec, Canada), Istituto Centrale per il Catalogo e la Documentazione (Rome, Italy)(ICCD)] and other contributors of partial translations; future translations in French, Italian, Portuguese, other languages*



Angel Falls

Athens

Athínai

Αθήναι

Ayers Rock

Bay of Biscay

Bhārat

Bora-Bora

Burkina Faso

Casablanca

Chichén Itzá

Donner Pass

Firenze

Gdansk

Holy See

Los Alamos

Luxor

Micronesia

New Zealand

Perú

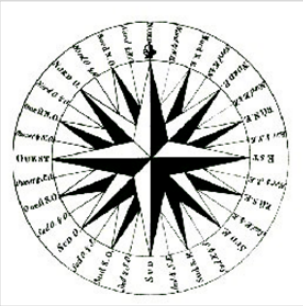
Rapa Nui

Taipei

臺北

Toronto

Yisrael



## TGN, the Getty Thesaurus of Geographic Names®

Names, other information for current & historical administrative places (cities, nations, empires) and physical features (e.g., *Firenze*, *Roman Empire*, *Ganges River*).

Current totals: 1,241,000; 1,800,000 names

- It includes formerly inhabited places, archaeological sites, and historical places with unknown exact locations (i.e., “lost settlements”)
- It focuses on places important to study of art and related disciplines
- It grows through contributions from large national geographic databases, the expert user community, archaeology projects, scholars, etc.



# TGN, the Getty Thesaurus of Geographic Names®

## Sample record

**ID:** 7011179

**Names:**

- Siena
- (it,en,es,fr,nl,de)
- Σιένα (el)
- Siyenah
- 锡耶纳 (zh)
- シエーナ (ja)
- Sienese (en-adj)
- Sienna (h-en)
- Sena Julia (h-la)
- Sanna (h)
- Saena (h)

**Hierarchical Rels. (polyhier.)**

- World (facet)
- .. Europe (continent)
- ... Italy (nation)
- .... Tuscany (region)
- ..... Siena (province)
- ..... Siena (inhabited place)

- World (facet)
- .. Europe (continent)
- ... Italian Peninsula (peninsula)
- .... Etruria (former confederation)
- ..... Siena (inhabited place)
- Historical: Late Etruscan

**Associative Rels**

- ally of Pisa ..(inhabited place) [7006082]
- Ghibelline allies, 13th-14th centuries

*Contributors:* BHA, FDA, GRLPSC, VP

*Sources:* Annuario Generale (1980); Canby, *Historic Places* (2007) 2/861; Dizionario Corografico Toscana (1977) 1508; Library of Congress Subject Headings (2002-); Milanesi, *Storia dell'Arte Senese* (1969) passim; NGA/NIMA database (2003-) -129709; TCI: Toscana (1984) 479 ff; Times Atlas of the World (1992) 183; UNESCO World Heritage Centre [online] (1992-) accessed 20 July 2010; Webster's Geographical Dictionary (2007) 1114

**Place Types**

- inhabited place settled by Etruscans
- (flourished by 6th century BCE)
- city
- archiepiscopal see
- commune (administrative) since 1125
- cultural center
- university center
- world heritage site

**AAT**

*Lat:* 43 19 07 N (43.3180)

*Long:* 011 19 50 E (11.3300)

*Elevation:* 1056.430 feet (322.0000 meters)

**Note:** Siena was founded as an Etruscan hill town; later was the Roman city of Sena Julia (3rd century BCE). It flourished under the Lombard kings (6th century CE) and was Medieval self-governing commune ...

Achilles Painter

An Qi

安岐

Bartolo di Fredi

Burgkmair, Hans,

the elder

Galleria degli Uffizi

Gilbert & George

Katsushika Hokusai

Kicking Bear

Master of Boi

Méraud, Pierre-

Antoine, père

Ngapatari, Hakaraia

O'Keeffe, Georgia

Pei, I. M.

Rothko, Mark

Sa'īd, Mahmūd

Skidmore, Owings

& Merrill

unknown Mende

Vikramaditya I

Wren, Christopher

Zeuxiades

Ζευξιάδης



## ULAN, the Union List of Artist Names®

Names, other information for people (artists, patrons, sitters) and corporate bodies (repositories, studios) related to the design, creation, patronage, collection, conservation, etc. of art, architecture, and other cultural materials (e.g., *Bartolo di Fredi, National Palace Museum*)  
Current totals: 223,000 records; 582,000 names

- It includes current and historical associative relationships (e.g., *student-teacher, firm-member*)
- Contributions to ULAN are from expert communities (museums, art libraries, cataloging projects, etc.)
- ULAN is contributed to the Virtual International Authority File (VIAF) (joint project with US Library of Congress and numerous libraries worldwide to combine name authority)





# ULAN, the Union List of Artist Names®

## Sample record

**ID:** 500115493

**Names:**

- Dürer, Albrecht (pref,de,en)
- Albrecht Dürer
- Duerer, Albrecht (en)
- Durer, Albrecht (en)
- Düro, Alberto (it)
- Durerus, Albertus (la)
- Direr, Albreht
- Djurer, Albrecht
- Dyûrâ, Albrecht
- Dîrers, Albrehts
- Alberto Duro Tedesco
- デューラー, アルブレヒト (ja)
- 阿尔布雷希特·丢勒 (zh)

**Nationalities:**

- German (pref)
- Bavarian

**AAT**

**Roles:**

- artist (preferred)
- painter
- printmaker
- engraver (printmaker)
- woodcutter
- draftsman
- illustrator
- designer
- mathematician
- theorist
- portraitist
- religious artist

**Gender:** male

**Birth and Death Places:**

- Born: Nuremberg (Bavaria, Germany) (inhab place)
- Died: Nuremberg (Bavaria, Germany) (inhab place)

**AAT**

**TGN**

**Events:**

- active: Nuremberg (Bavaria, Germany) (inhab pl)
- active: Venice (Veneto, Italy) (inhabited place)

**Associative Relationships:**

- apprentice of Wolgemut, Michael; 1486 to 1488  
.....(German painter, printmaker, 1434/1437-1519)
- child of Dürer, Albrecht, the elder  
.....(German goldsmith, 1427-1502)
- founder of ...Albrecht Dürer Workshop  
..... (German workshop, established 1495)
- patron was ...Maximilian I, Holy Roman Emperor  
..... (Roman emperor, 1459-1519)

**Contributors:**

VP,JPGM,Avery,WCI,Prov,GRLPSC,BHA,CCA

**Sources:** Bartrum, Albrecht Dürer and his Legacy (2002); Bénézit, Dictionnaire des Peintres (1976); Bartsch, Le peintre graveur.

Adoration of the Magi  
Tree of Life Quilt  
Bhimesvara Temple  
Cane Back Chair  
Château de Versailles  
Das Treffen der  
Heiligen Drei Könige  
Empire State Building  
Himeji Castle  
姫路城  
Irises  
La Gioconda  
Model for the Façade  
of San Lorenzo  
Mona Lisa  
MS Ludwig XV  
Pantheon  
Portrait of Napoleon  
Square Ting Vessel of  
Duke Kang  
西周早期 康侯方鼎  
Still Life with Flowers  
Venus and Cupid  
Warrior on Horseback  
Zwaardstootplaat



## CONA, the Cultural Objects Name Authority®

Titles, other information for moveable works (paintings, sculpture, prints, drawings, photographs, ceramics, etc.) and architecture (buildings, bridges, etc.) (e.g., *Hagia Sophia*, *Mona Lisa*, *Fantastic Landscape with a Pavilion*).

Current totals: [5,500 records; 9,300 titles]

- It includes works executed or designed (e.g., a built work for which only design drawings exist); extant or destroyed / historical
- CONA is a thesaurus; it is also mapped to CDWA, CCO, CIDOC CRM, and LIDO
- CONA grows through contributions from repositories of art and the expert cataloging and scholarly community



# CONA, the Cultural Objects Name Authority®

Under discussion are the possible applications of CONA:

Perhaps in the future

- CONA could be a resource to link the Getty vocabularies to records for art and architecture (in LOD or otherwise)
- CONA could link subject terminology to art and architecture records
- CONA could facilitate linking between works, including works held in different repositories but having historical relationships (e.g., studies, disassembled manuscripts, etc.)



# CONA, the Cultural Objects Name Authority®

## Sample record

### 1. CONA could link work records to Getty vocabularies

**ID:** 700001950

**Titles:**

Shiva met de maan in het haar (nl)  
Shiva with the Moon in his Hair (en)

**Catalog Level:** item

**Work Types:**

sculpture (visual work) **AAT**

**Classifications:**

sculpture (preferred)

**Creation Date:** 1000/1200

**Creator Display:**

anoniem  
sculptor: unknown Chola **ULAN**

**Locations:** **ULAN** **TGN**  
**Current:** Rijksmuseum (Amsterdam, North Holland, Netherlands) AK-MAK-1291; RM001.collect.910; Bruikleen van de Vereniging van Vrienden der Aziatische Kunst  
**Creation:** Tamil Nādu (India)

**Materials:** bronze founding **AAT**

**Dimensions:** 40 cm (height) x 24cm (width) x 10.5 (depth)

**Events:** exhibition: Metamorfoze/Geheugenproject Willem Witsen **AAT**

**Cultures:**

Indian Chola **AAT**

**General Subject:**

human figure(s) (preferred )  
religion and mythology

**Specific Subjects:**

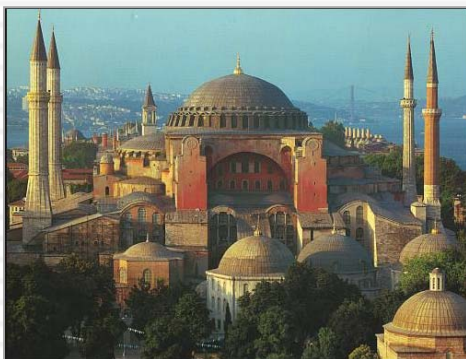
Shivá (Hindu iconography)  
mudrā (pose, <visual and representational concepts>)

*[link to Iconclass]*

**AAT**  
**TGN**  
**ULAN**  
**CONA**  
**CONA IA**

**Contributors & Sources:** [Rijksmuseum;VP]; Rijksmuseum XML file

Images may be under additional copyright



# CONA, the Cultural Objects Name Authority®

## Sample record

**ID:** 700000141

**Titles/Names:**

Hagia Sophia  
(en,de,nl)  
Ayasofya (tr)  
Αγία Σοφία (el)  
Agia Sofia  
Haghia Sophia  
Sainte-Sophie (fr)  
Santa Sofía (es)  
Santa Sofia (it)  
Sancta Sophia (la)  
Sancta Sapientia (la)  
Holy Wisdom (en)  
Saint Sophia (en)  
聖蘇菲亞大教堂 (zh)

**Work Types:** church; mosque;  
museum

**AAT**

**Date:** original structure dated  
from 4th century CE; present  
structure built 532-537 CE; rebuilt  
in 12th century

**ULAN**

**Creators:** Anthemios of Tralles  
(Byzantine architect, ca. 474-ca.  
534) and Isidoros of Meletus, the  
Elder (Byzantine architect, active  
mid-6th century);  
**Patron:** Justinian I (Byzantine  
emperor, ca. 482-565)

Built Work

... Hagia Sophia

**Associative Relationship**

**depicted in** *View of the Hagia  
Sophia in Constantinople*; Eduard  
Hildebrandt; watercolor; ca. 1852;  
Hermitage Museum (Saint  
Petersburg, Russia) [700008345]

**Location:** İstanbul (Marmara, Turkey)

**Address Note:** 41.008548°N; 28.979938°E

**TGN**

**Materials:** system bearing masonry,  
centralized plan; interior surfaces are  
sheathed with polychrome marble,  
porphyry, and mosaics

**AAT**

**Dimensions:** central dome: diameter 31 m  
(102 feet); height 56 m (184 feet)

**General Subject:** architecture  
**Specific Subject:** Holy Wisdom  
Religion/Mythology

**AAT**

**TGN**

**ULAN**

**CONA**

**CONA IA**

**Note:** Domed basilica was con  
by the Emperor Justinian; built in  
Constantinople in 6th century...

**Contributors:** Avery, BHA, FDA, VP

**Sources:** Fleming, *Penguin Dictionary of  
Architecture* (1999); Herrin, Judith,  
*Byzantium* (2007); Maidstone, *Hagia Sophia*  
(2002); Theoharidou, *Architecture of Hagia  
Sophia* (1988); Xydis, *Chancel Barrier of  
Hagia Sophia* (1947)

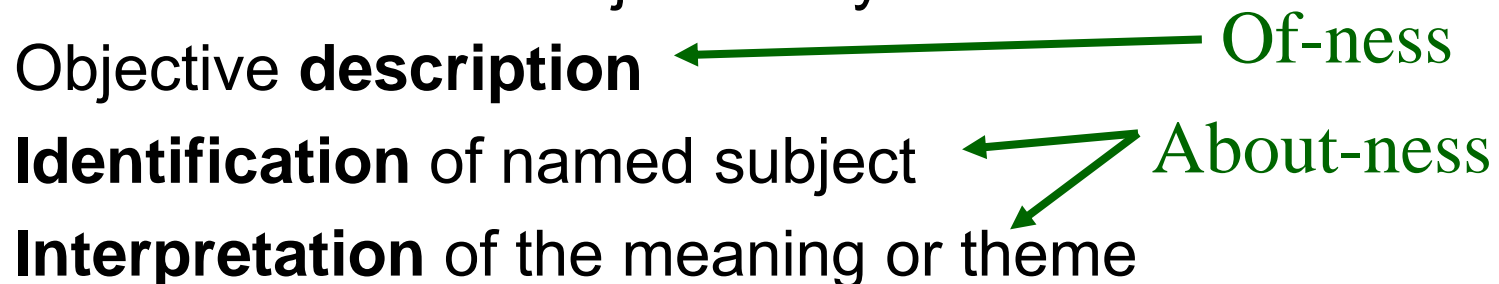
# CONA, the Cultural Objects Name Authority®

## 2. CONA could link depicted subjects

- ❑ Whereas libraries have a tradition of cataloging the subjects of works
- ❑ Many art museums typically do not index subject matter depicted in / represented by works
  - [sitters, places, events, iconographical themes, dedication of certain buildings, etc.]
  - In a survey conducted of American art museums' data, of the core fields (agreed by consensus in CDWA, CCO, etc.), all museums included all core fields except the subject [by OCLC (*Online Computer Library Center, a nonprofit computer library service and research organization*); core fields per CCO and CDWA (Categories for the Description of Works of Art)]

# CONA, the Cultural Objects Name Authority®

Index three levels of subject analysis

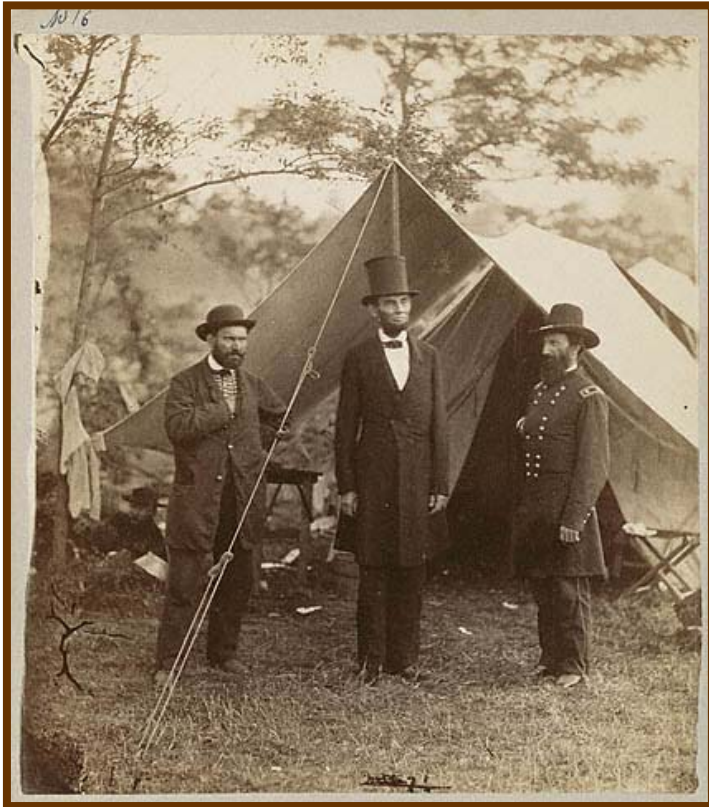


- For such subject indexing: CONA can link to AAT, TGN, ULAN, CONA itself, and the CONA Iconography Authority
- As well as to other sources for subjects, such as the US Library of Congress authorities and Iconclass (*we intend to work closely with Iconclass, a Dutch classification system, [www.iconclass.nl/](http://www.iconclass.nl/)*)



# CONA, the Cultural Objects Name Authority®

## Depicted Subjects



*Lincoln on the Battlefield of Antietam;*  
albumen print; Alexander Gardner  
(American photographer, 1821-1882);  
1862; 8 5/8 x 7 3/4 inches; J. Paul  
Getty Museum (Los Angeles, CA);  
84\_xm\_482.1

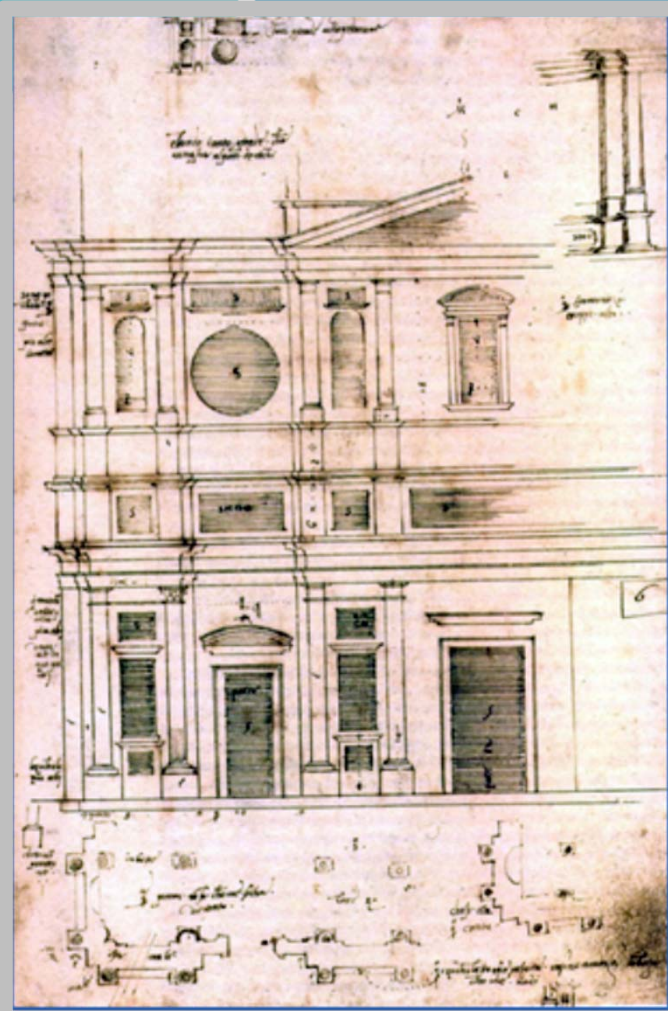
### General

portraits  
history and legend

### Specific

Antietam National Battlefield  
(Sharpsburg, Maryland, United States) . TGN  
American Civil War (event) . . . . . CONA IA  
Abraham Lincoln (American president  
1809-1865) . . . . . ULAN  
John McClelland (American Union  
General, 1812-1900) . . . . . ULAN  
Allan Pinkerton (American Secret  
Service agent, detective, 1819-1884) . ULAN  
army camp . . . . . AAT  
tents (portable buildings) . . . . . AAT

# CONA, the Cultural Objects Name Authority®



*Plan and Elevation of the façade of San Lorenzo; drawing; Aristotile da Sangallo after Michelangelo; late 15th century; 32.0 x 21.5 cm (12 1/2 x 8 3/8 inches); pen and sepia ink; Staatliche Graphische Sammlung (Munich, Germany) #33258*

## Depicted Subjects

**General**  
architecture

**Specific**

San Lorenzo (built work, Florence, Italy) . . . . .	CONA
church . . . . .	AAT
façade . . . . .	AAT
elevation . . . . .	AAT
plan . . . . .	AAT

# CONA, the Cultural Objects Name Authority®



## Depicted Subjects

### *General*

religion and mythology

human figure(s)

### *Specific*

bodhisattva . . . . . **AAT**

Avalokiteshvara. **CONA IA**

Maitreya . . . . . **CONA IA**

compassion . . . . . **AAT**



Battle of Little Bighorn  
Nohochacyum

Amun

Ἄμμων

Valhöll

Valhalla

Pied Piper of Hamelin

Rattenfänger von Hameln

Shiva

Siva

Xiva

शिव

Adoration of the Magi

Adorazione dei Magi

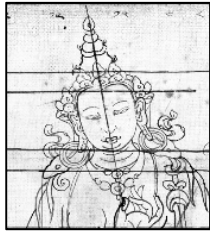
Anbetung der Heiligen

Drei Könige

Bambi

Battle of Salamis

Naumachia tēs Salaminos



## The CONA Iconography Authority

Named events, religious/mythological iconography, fictional characters and places, themes from literature

- Includes the proper names of subjects not covered by other Getty vocabularies
- The CONA Iconography Authority (IA) is a module within CONA; over time, it could become a stand-alone authority through contributions
- Includes links to other sources, such as Iconclass and the US Library of Congress subject authorities



Enthronement of Puyi  
溥儀的登基大典

Patricia Harpring © 2014 J. Paul Getty Trust. For educational purposes only. Do not distribute.



Images may be under additional copyright



# The CONA Iconography Authority

## Sample record

**ID:** 1000085

**Names:**

Avalokiteshvara

Avalokiteśvara

अवलोकितेश्वर

Kannon

Guanyin

Guānzìzài

觀自在

觀音

观音菩萨

**AAT link:**

role/attribute bodhisattva

role/attribute Lotus (genus)

related to Mahayana Buddhism

related to Theravada Buddhism

AAT  
TGN  
ULAN  
CONA

**Associative Relationship:**

associated with .... Krishna (Hindu iconography)

**Note:** The bodhisattva of infinite compassion and mercy; embodies the compassion of all Buddhas. This bodhisattva is variably depicted and portrayed in different cultures as either female or male...

**Contributors & sources**

[VP] Encyclopedia Britannica Online (2002-); Bowker, Oxford Dictionary of World Religions (1997); Huntington, Art of Ancient India (1985)

**Iconclass:** no **LC:** LC control no.: sh 85010492



## Relationships in CONA

3. CONA could provide links between works

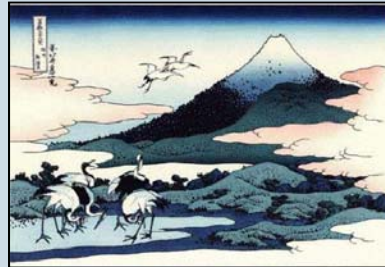
Whole/part relationships for groups, subgroups, items

*The Dissipation*; Jacques Callot (French, 1592-1635); etching; Lieure, no. 1407, State ii/iii; National Gallery of Art (Washington, DC); R.L. Baumfeld Collection; 1969.15.833.



# CONA, the Cultural Objects Name Authority®

## Relationships in CONA



- Whole/Part Records for a series and items (conceptual relationship)



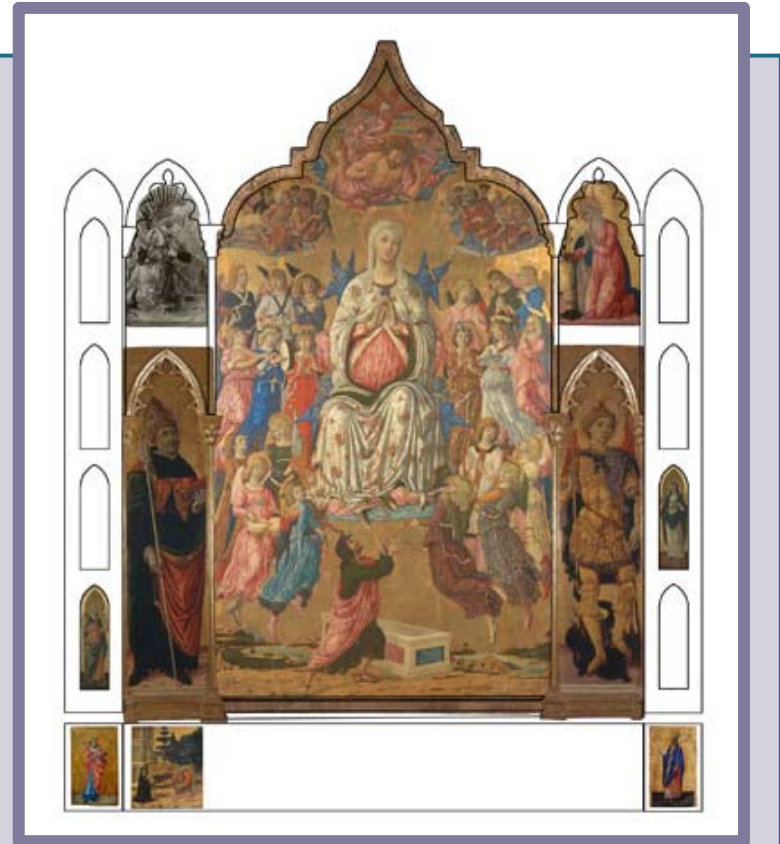
*Great Wave at Kanagawa*; Katsushika Hokusai (Japanese, 1760-1849); published by Nishimura Eijudo (Japanese, 19th century); woodcut, polychrome ink and color on paper; 25.7 x 37.9 cm (10 1/8 x 14 15/16 inches); Metropolitan Museum of Art, New York, New York, USA), JP1847.



# CONA, the Cultural Objects Name Authority®

## Relationships in CONA

- CONA could virtually reconstruct disassembled works
- Held in different repositories or locations
- Manuscripts, paintings, sculpture, architecture, etc.



Proposed reconstruction of Matteo di Giovanni's Asciano Altarpiece by Rachel Billinge. Extant panels are now in National Gallery London, Siena, Asciano, Villa I Tatti, Esztergom, Altenburg, Rhode Island, and Private Collections.



# CONA, the Cultural Objects Name Authority®

## Relationships in CONA

Related works in different repositories may be linked



Jean-Auguste-Dominique Ingres; Study for the Dress and the Hands of Madame Moitessier; 1851; graphite on tracing pape; 13 15/16 x 6 5/8 inches; J. Paul Getty Museum (Los Angeles, California); 91.GG.79

*Associative Relationships*

study for

study is



Jean-Auguste-Dominique Ingres; Madame Moitessier; 1851; Samuel H. Kress Collection, National Gallery of Art (Washington, DC); 1946.7.18

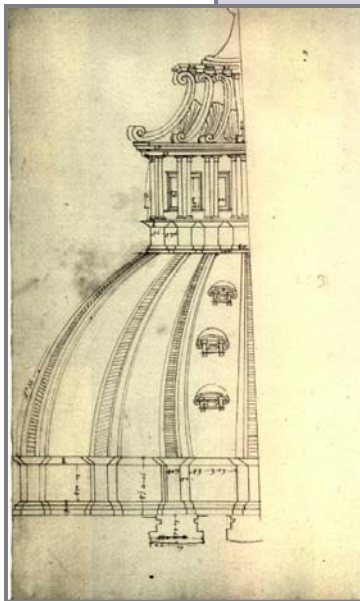
# CONA, the Cultural Objects



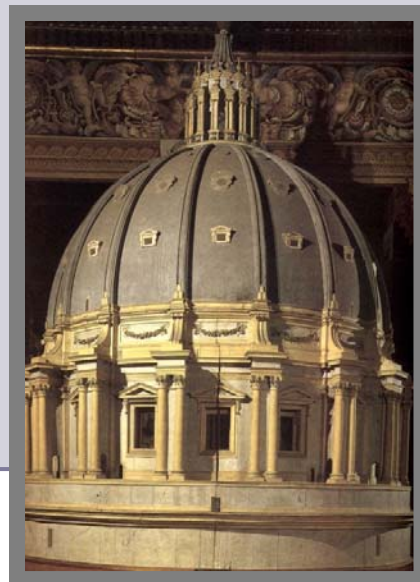
study for



part of



depicts



model for

- Complex relationships are possible between works in CONA
- Whole/part relationships
- Associative relationships
- *Built work – dome – design drawing – record drawing - model*

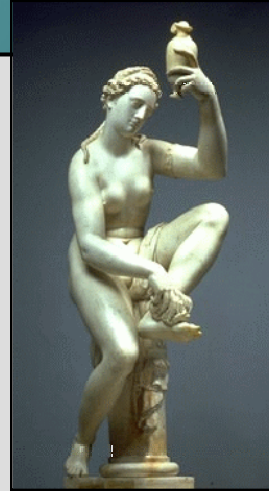
# Getty Vocabularies to LOD: Usage and Editorial Perspective

AAT TGN ULAN CONA





# How are vocabularies used?



**Giambologna**  
*Female Figure*;  
Marble; H: 48 in.; 2008 J.  
Paul Getty Museum;  
82.SA.37



**Giovanni Bologna**  
*Triton*, 16th  
century (1560–70);  
Bronze; H. 36 in;  
Metropolitan Museum of  
Art; Bequest of  
Benjamin Altman, 1913  
(14.40.689)



**Jean Boulogne**  
*Mercure  
volant*; Bronze;  
H 1,7 m; L 0,57m; Pr  
1,4 m; Musee du  
Louvre, Collection  
du duc de Brissac  
(saisie en 1794)?;  
MR



**Bologna, Giovanni da; Christ Crucified.**  
probably before  
1588; bronze,  
corpus, height including  
foot rest: 371 x 254 x 078 m ;  
National Gallery of Art,  
Washington, DC. Gift of Mr.  
and Mrs. John R. Gaines in memory ...

- Traditional use of vocabularies for retrieval focuses on the names
- If a user asks for one name/term, all of the synonyms can be used for retrieval
- For example, if a user searches on “Giovanni da Bologna”

*From ULAN*

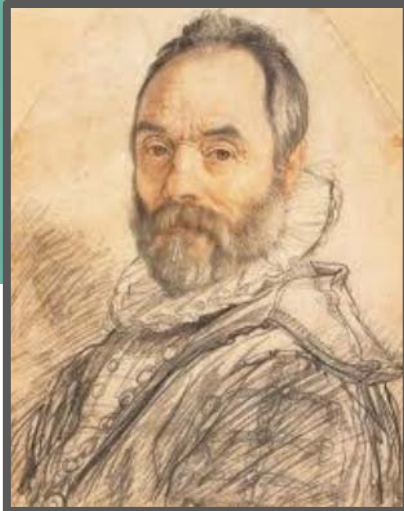
**Giambologna**  
**Giovanni da Bologna**  
**Giovanni Bologna**  
**Jean Boulogne**  
**Jean de Boulogne**  
**Bologna, Giovanni da**

“giambologna” OR “giovanni da bologna” OR “giovanni bologna” OR “jean boulogne” OR “bologna, giovanni da”

# How are vocabularies used?

- LOD and new retrieval methods can incorporate hierarchical and associative relationships, and other links or implied relationships to answer more interesting complex questions and aid serendipitous discovery

## Associative relationships



**Giambologna** (*Flemish sculptor and architect, 1529-1608, active in Italy*)

**Marie de Medici** (*French queen, patron, 1573-1642*)

had patron

patron of

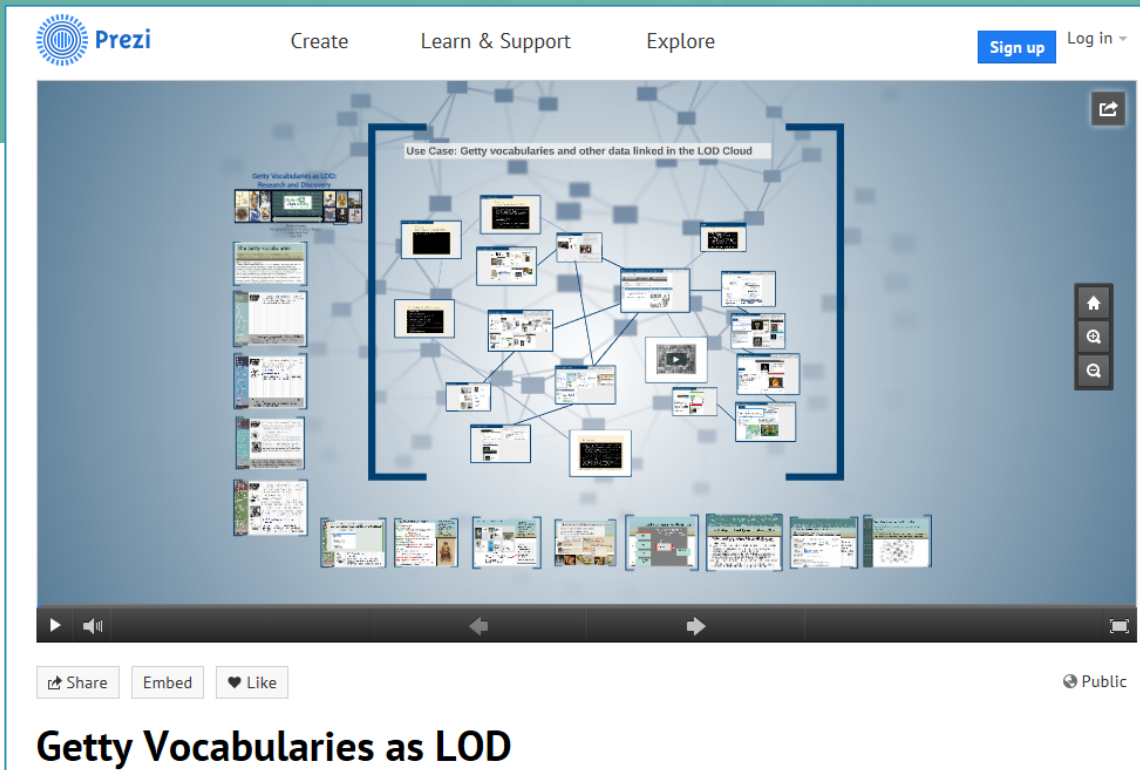
**Tacca, Pietro** (*Italian sculptor and architect, 1577-1640*)

teacher of  
student of

Display Date: from 1592  
Start Date: 1592 End Date: 1608

# How are vocabularies used?

## Use Case scenario



The screenshot shows a Prezi presentation interface. At the top, there is a navigation bar with the Prezi logo, 'Create', 'Learn & Support', 'Explore', 'Sign up', and 'Log in'. The main content area displays a network diagram with a central node labeled 'Use Case: Getty vocabularies and other data linked in the LOD Cloud'. The diagram consists of numerous smaller nodes connected by lines, representing a complex web of data. Below the diagram, there is a row of smaller thumbnail images. At the bottom of the presentation, there are controls for 'Share', 'Embed', 'Like', and 'Public'.

**Getty Vocabularies as LOD**

- For an example of a “use case” illustrating how the Getty vocabularies can aid in research, see the [Prezi presentation: Getty Vocabularies as LOD](#)
- See how a researcher begins a journey to find out about incense burners, and within minutes rather than days finds all she wished to find, as well as unexpected discoveries through LOD

[http://prezi.com/om6v5oa-o8ob/getty-vocabularies-as-lod/?utm\\_campaign=share&utm\\_medium](http://prezi.com/om6v5oa-o8ob/getty-vocabularies-as-lod/?utm_campaign=share&utm_medium)

# Editorial perspective: LOD

## Editorial rules

Consistency in application of rules

Consistency in content of controlled terminology within each vocabulary

Creating actual links between vocabularies

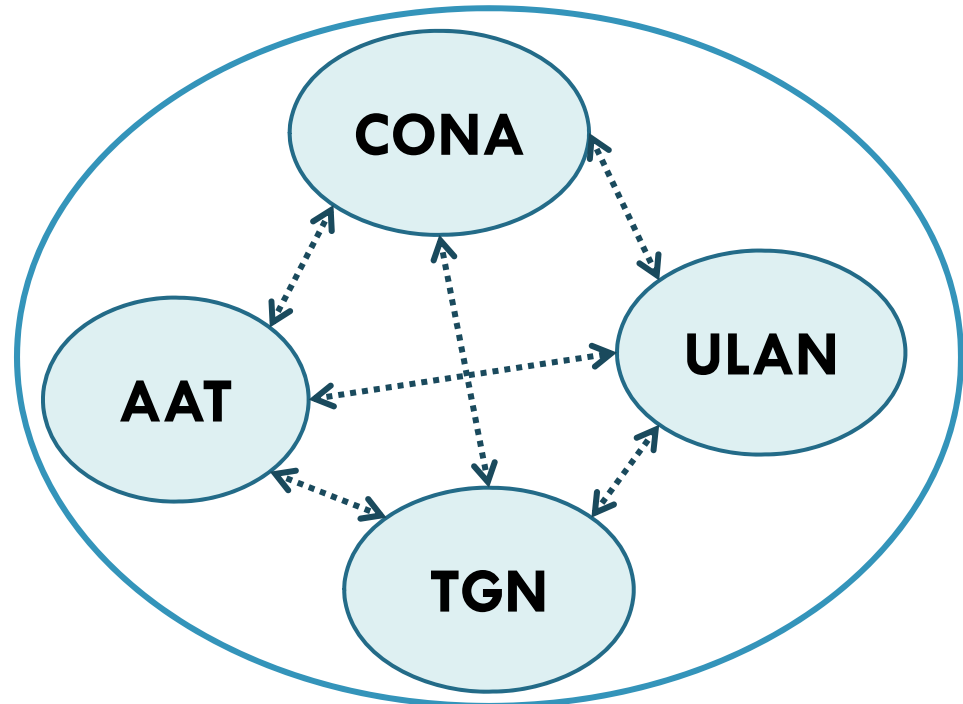
- The Getty vocabularies have always been compiled by experts
  - Using authoritative sources
  - Rules in extensive editorial manuals
- Seen through the LOD lens, any inconsistency or omission become ever more obvious
- Getty Vocabulary Program analyzes and cleans up of the data for LOD releases

```
{ "Subject": { "type": "uri", "value": "http://vocab.getty.edu/aat/300198841" }, "Predicate": { "type": "uri", "value": "http://www.w3.org/2000/01/rdf-schema#label" }, "Object": { "type": "literal", "value": "rhyton", "xml:lang": "en" } }, { "Subject": { "type": "uri", "value": "http://vocab.getty.edu/aat/300198841" }, "Predicate": { "type": "uri", "value": "http://www.w3.org/2000/01/rdf-schema#label" }, "Object": { "type": "literal", "value": "rhyta", "xml:lang": "el-latn" } }, { "Subject": { "type": "uri", "value": "http://vocab.getty.edu/aat/300198841" }, "Predicate": { "type": "uri", "value": "http://www.w3.org/2000/01/rdf-schema#label" }, "Object": { "type": "literal", "value": "rhyton", "xml:lang": "en" } }, { "Subject": { "type": "uri", "value": "http://vocab.getty.edu/aat/300198841" }, "Predicate": { "type": "uri", "value": "http://www.w3.org/2000/01/rdf-schema#label" }, "Object": { "type": "literal", "value": "rhyton", "xml:lang": "en" } }
```



# Editorial perspective: LOD

- **From conceptual to actual links**
- Lookup lists had been based on AAT, but had gotten out of sync with AAT over the years
- E.g., nationalities, roles in ULAN and place types in TGN must map to AAT terms



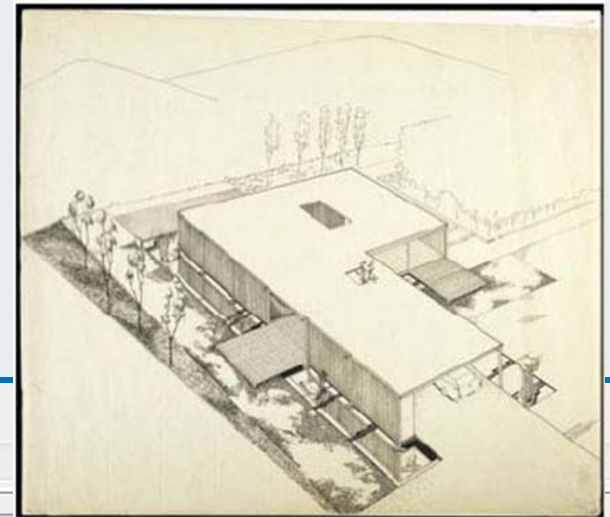
```
{
  "Subject": {
    "type": "uri",
    "value": "http://vocab.getty.edu/aat/300198841"
  },
  "Predicate": {
    "type": "uri",
    "value": "http://www.w3.org/2000/01/rdf-schema#label"
  },
  "Object": {
    "type": "literal",
    "value": "rhyta",
    "xml:lang": "es"
  }
}, {
  "Subject": {
    "type": "uri",
    "value": "http://vocab.getty.edu/aat/300198841"
  },
  "Predicate": {
    "type": "uri",
    "value": "http://www.w3.org/2000/01/rdf-schema#label"
  },
  "Object": {
    "type": "literal",
    "value": "rhyton",
    "xml:lang": "en"
  }
}, {
  "Subject": {
    "type": "uri",
    "value": "http://vocab.getty.edu/aat/300198841"
  },
  "Predicate": {
    "type": "uri",
    "value": "http://www.w3.org/2000/01/rdf-schema#label"
  },
  "Object": {
    "type": "literal",
    "value": "rhyton",
    "xml:lang": "en"
  }
}
```



Tools to link as  
data is loaded:  
Example

# Editorial perspective: LOD

- Since CONA is linked to the other vocabularies, it is necessary to match incoming values to the AAT, ULAN, TGN, and CONA Iconography Authority when loaded
- The CVA/Processor was developed for editors to use where auto-links are not possible



CONA record, creator

WorkType/Class/Level	Creator Display	Related Person/Corp	Creation Date	Location	Physical Characteristics
		<b>Person/Corp Label</b>	<b>ULAN ID</b>	<b>Role</b>	<b>Extent</b>
		Koenig, Pierre (American architect, 1925-2004) (P)	500086520	architect/30010	

Koenig, Pierre (American architect, 1925-2004) 500086520

link to ULAN

## Merging records

Finding matches

Manual or automated merge, vetted by VP editors

**Subject Search**

Result Limit:  Search Type:  ENTER SEARCH CRITERIA

Subject ID:  Search Method:  SUBJECTS/TERMS: 2/5

Search Text:

Qualifier:  Parent ID:  Role:  ID:

Sources:  Contributors:

Birth Date: Least:  Most:  Death Date: Least:  Most:  Nationality:  ID:

Status	Mark	Preferred Name	Name	Biography
		<b>Palamedesz., Anthonie</b>		
		Palamedes, Anthonie		Dutch painter, active mid-17th century
		<b>Pallemedes, Anthonie</b>		
		Palamedesz., Anthonie		Netherlandish artist, 1601-1673

Patricia Harpring, 2010 © J. Paul Getty Trust



# What is LOD: In Brief

AAT

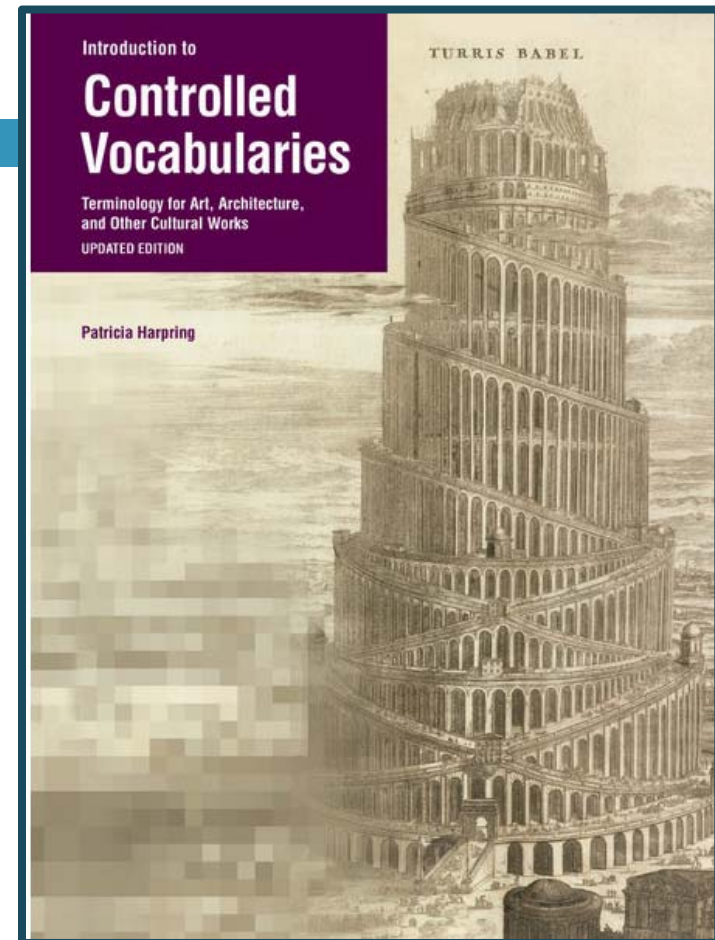
TGN

ULAN

CONA



- This presentation is not a primer on **controlled vocabularies** nor on **what is LOD**
- They focus on issues surrounding the Getty vocabularies specifically
- For basic information on vocabularies, see [\*Introduction to Controlled Vocabularies\*](#) (Harpring, revised 2013) and its bibliography
- For basic information on what is LOD, see this Europeana video <http://vimeo.com/36752317>. World Wide Web Consortium (W3C) Glossary: [www.w3.org/TR/ld-glossary/](http://www.w3.org/TR/ld-glossary/)



# Why Linked Open Data?

- When data is linked and open = data is structured and published according to principles allowing it to be interlinked and made openly accessible and shareable on the Semantic Web
- Linked Open Data on the Web has the potential to connect data from diverse domains
  - can use the Web to create defined “typed” links for meaningful linking between data from diverse resources
- LOD will enable a new generation of search engines to follow the links between data resources in order to deliver ever more complete answers as new data sources become available

# Why Linked Open Data?

## Triples

```
<aat:300198841> <skos:prefLabel> "rhyta"@en  
<aat:300198841> <skos:altLabel> "ritons"@fr  
<aat:300198841> <rdf:type> <gvp:Concept>  
<aat:300198841> <gvp:broaderPreferred> <aat:300194567>  
<aat:300198841> <gvp:aat2100_distinguished_from> <aat:300197140>
```

subject

predicate

object

**rhyta** – **[are] distinguished from** – **stirrup cups**

- W3C standards (RDF) to describe the data in triples
- Three column format – known as a triple – forms the fundamental building block of semantic representations.
- Subject - corresponds to the entity – a ‘thing’
- Predicate – property of the entity - names, birth/death dates
- Object - Subjects in another triple OR Literal values



# Why Linked Open Data?

/1999/02/22-rdf  
/1999/02/22-rdf  
/2000/01/rdf-sch  
/2000/01/rdf-sch  
/2000/01/rdf-sch  
/2000/01/rdf-sch


```
<aat:300198841> <skos:prefLabel> "rhyta"@en  
<aat:300198841> <skos:altLabel> "rifons"@fr  
<aat:300198841> <rdf:type> <gvp:Concept>  
<aat:300198841> <gvp:broaderPreferred> <aat:300194567>  
<aat:300198841> <gvp:aat2100_distinguished_from> <aat:300197140>
```

[Semantic View](#) ([JSON](#), [RDF](#), [N3/Turtle](#), [N-Triples](#))

■ [Representative Images](#): 1 2 3

ID: 300198841

Record Type: concept

 **rhyta** (drinking vessels, <vessels for serving and consuming food>, ... Furnishings and Equipment (Hierarchy Name))

**Note:** Refers to vessels from Ancient Greece, eastern Europe, or the Middle East that typically have a closed form with two openings, one at the top for filling and one at the base so that liquid could stream out. They are often in the shape of a horn or an animal's head, and were typically used as a drinking cup or for pouring wine into another vessel. Drinking was done by holding the rhyton above the drinker's head and catching the stream of liquid in the mouth.

## Terms:

**rhyta** (**preferred**, C,U,LC,English-P,D,U,PN)  
(Greek (transliterated)-P,D,U,PN)  
(Spanish,UF,U,PN)

**rhyton** (C,U,English,AD,U,SN)  
(Greek (transliterated)-AD,U,SN)

# Why Linked Open Data?

- ❑ In an LOD world, users' research will operate on top of an unbound, global data space
- ❑ LOD will facilitate the ability to derive new information from the information the user already has, through inference, classification, and other applications of logic onto the data
- ❑ Publishing information as LOD unlocks the full knowledge potential of databases, allowing researchers to access, query, and recombine data created and stored by institutions of all kinds—libraries, museums, archives, research centers, laboratories, universities, governments, publishers, and others
- ❑ LOD has the enormous potential to advance scholarship within the humanities and beyond

<http://vocab.getty.edu/aat/300198841> <http://www.w3.org/1999/02/22-rdf-schema#Property>  
<http://vocab.getty.edu/aat/300198841> <http://www.w3.org/1999/02/22-rdf-schema#Property>  
<http://vocab.getty.edu/aat/300198841> <http://www.w3.org/2000/01/rdf-schema#Property>  
<http://vocab.getty.edu/aat/300198841> <http://www.w3.org/2000/01/rdf-schema#Property>  
<http://vocab.getty.edu/aat/300198841> <http://www.w3.org/2000/01/rdf-schema#Property>  
<http://vocab.getty.edu/aat/300198841> <http://www.w3.org/2000/01/rdf-schema#Property>

# Why Linked Open Data?

- The time was right for the Getty, particularly as the LOD project coincides with the Getty's Open Content initiative
  - The J. Paul Getty Museum and Getty Research Institute (GRI) make available, without charge, all available digital images to which the Getty holds the rights or that are in the public domain to be used for any purpose. No permission is required
  - [www.getty.edu/about/opencontent.html](http://www.getty.edu/about/opencontent.html)
- Also, GRI Portal: The Getty Research Portal™ is an online search platform providing global access to growing number of digitized art history texts
- The Getty Conservation Institute (GCI), GRI, and the Getty Museum are looking into releases of LOD metadata

# Licensing the data

- ❑ Historically, the Getty vocabularies relational tables, XML, (MARC) were licensed, with use somewhat restricted; fees adjusted for not-for-profit and for-profit licensees
- ❑ Policy makers and legal experts analyzed which licensing was best for LOD

## Open Data Commons Attribution License (ODC-By) v1.0

Allows that you (the users) are free to do the following:

- ❑ To Share: To copy, distribute, and use the database
- ❑ To Create: To produce works from the database
- ❑ To Adapt: To modify, transform, and build upon the database
- ❑ As long as you Attribute: You must attribute any public use of the database, or works produced from the database, in the manner specified in the license
  - For any use or redistribution of the database, or works produced from it, you must make clear to others the license of the database and keep intact any notices on the original database
- ❑ <http://opendatacommons.org/licenses/>



# Linked Documents vs Linked Data

- Linked Documents on the Web
  - Connected by hypertext
  - Allows users to traverse via Web browsers
  - Data is made available in formats such as CSV, XML, or marked up as HTML tables
- Linked Data on the Web
  - Connects data from diverse domains such as people, books, scientific publications, films, genes, drugs and clinical trials, online communities, statistical and scientific data.
  - Enables new generation of search engines that follow the links between data sources to deliver more complete answers as new data sources appear
  - Operate on top of an unbound, global data space.
  - Uses the Web to create typed links between data from different sources.

# Linked Open Data (LOD)

## □ Linked Data

- A method of publishing structured data so that it can be interlinked and become more useful.
- It builds upon standard Web technologies such as HTTP and URIs.
- But, rather than using them to serve web pages for human readers, it extends them to share information in a way that can be read automatically by computers.

## □ Open data

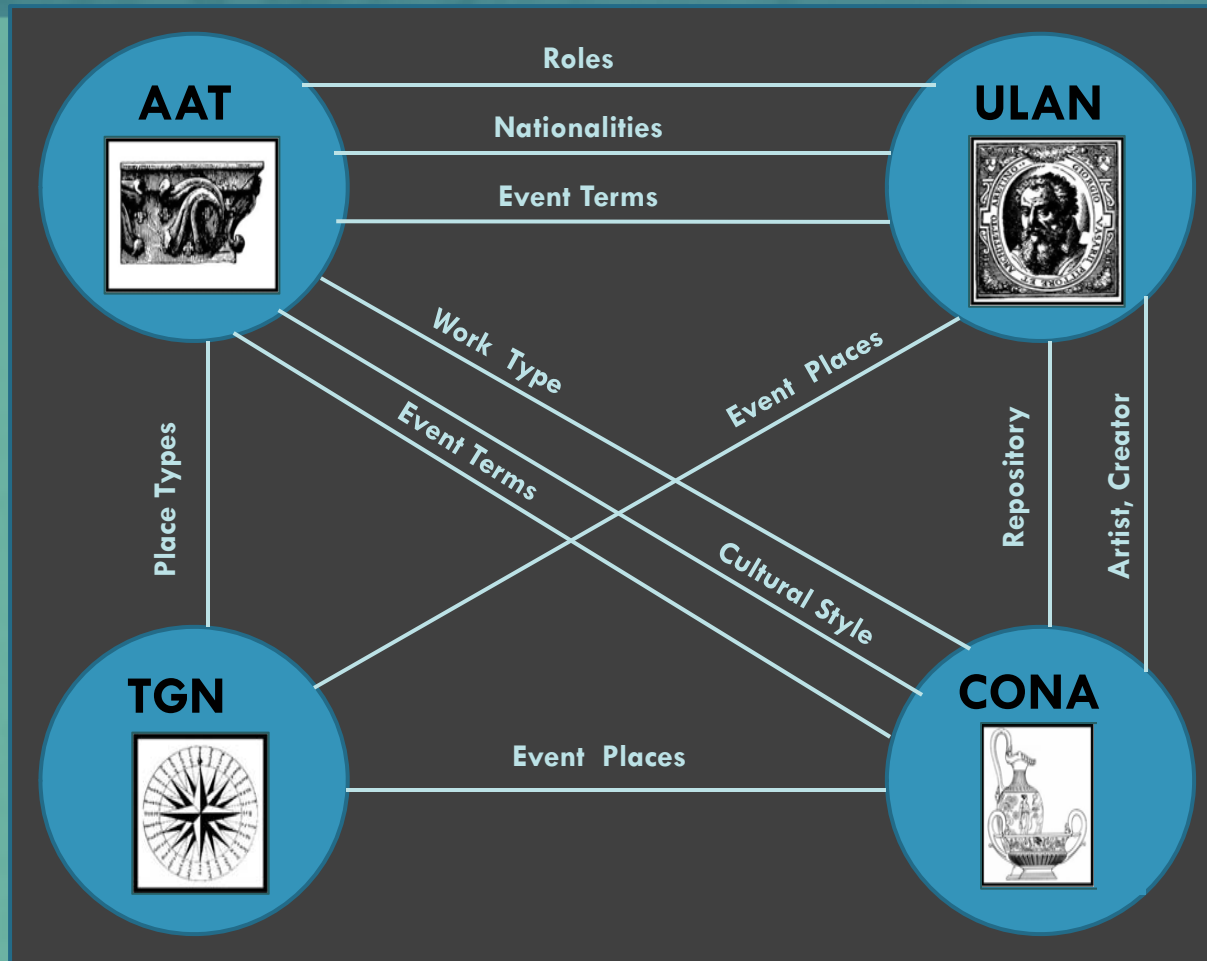
- The idea that certain data should be freely available to everyone to use and republish as they wish, without restrictions from copyright, patents or other mechanisms of control.

## □ Linked Open Data (LOD)

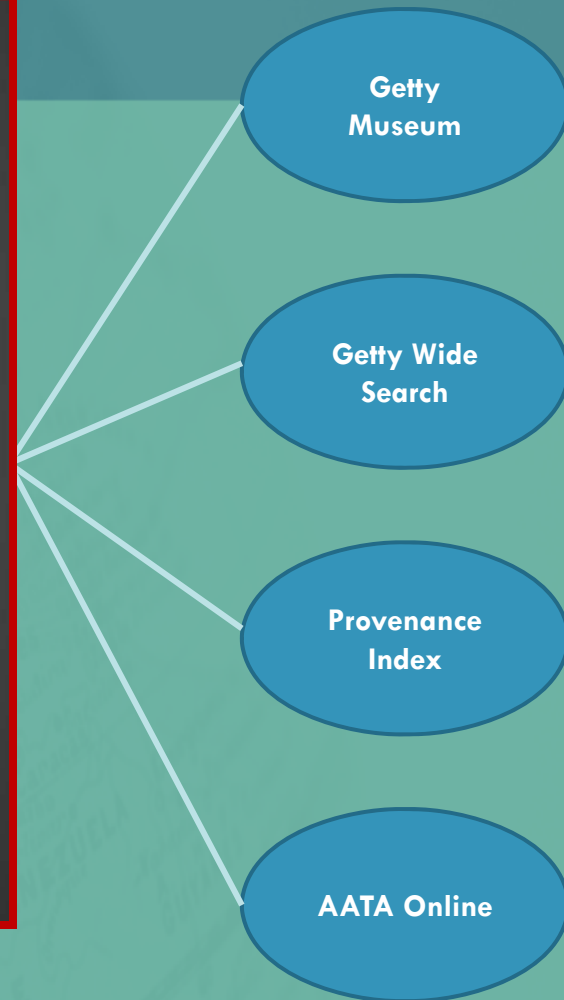
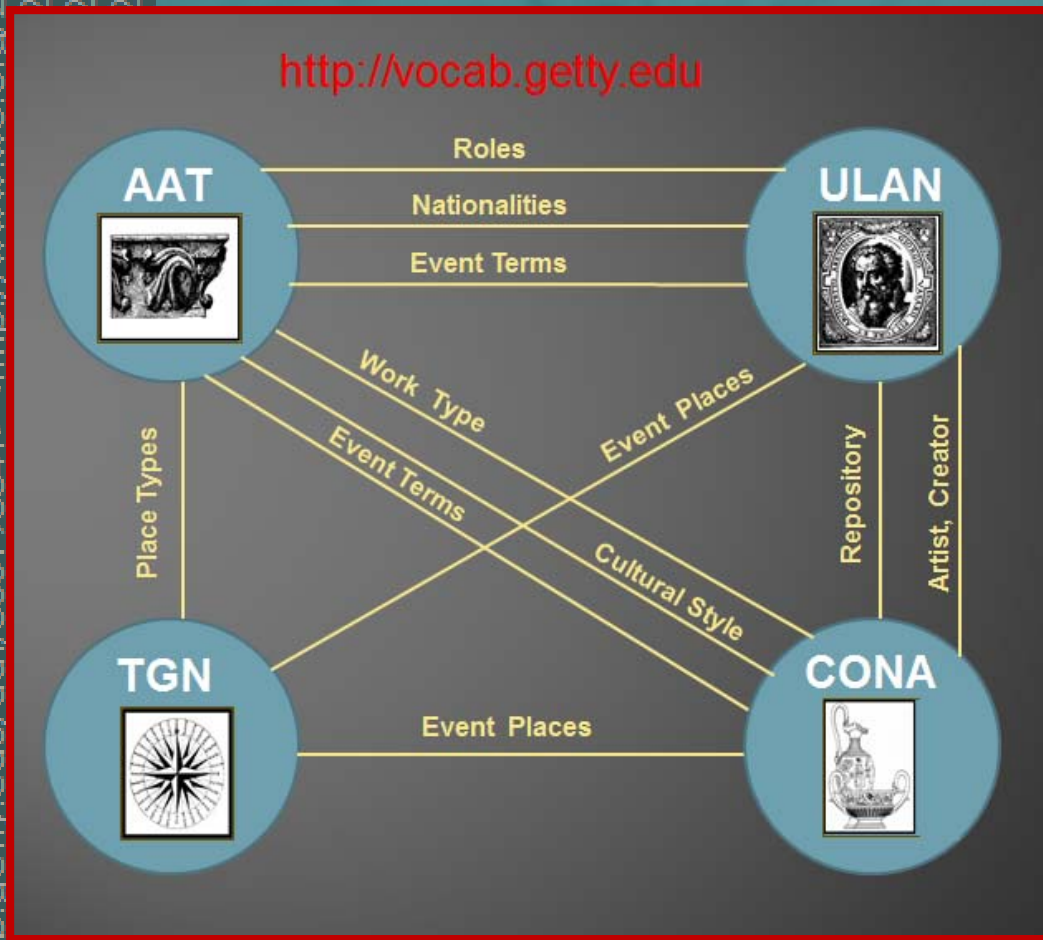
- A community project, sponsored by the Semantic Web Education and Outreach group of the W3C, to extend the Web with a data commons by publishing various open datasets as RDF on the WEB and by setting RDF links between data items from different data sources.
- Both linked and open.

# Linking Possibilities: Getty Vocabularies

<http://vocab.getty.edu>



# Linking Possibilities: Other Getty Projects

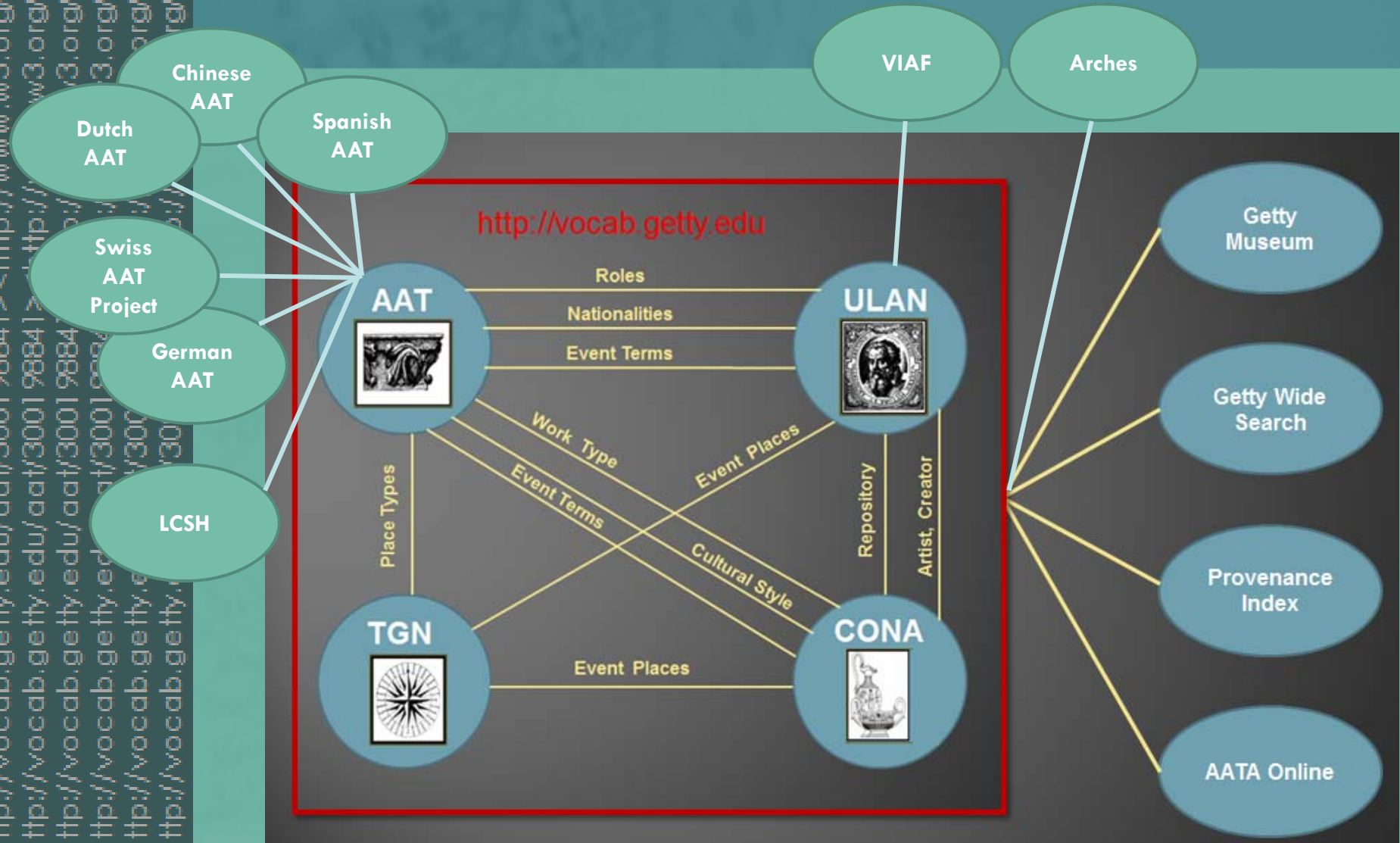


The Getty Vocabularies acts as a conduit to connect the projects to each other.



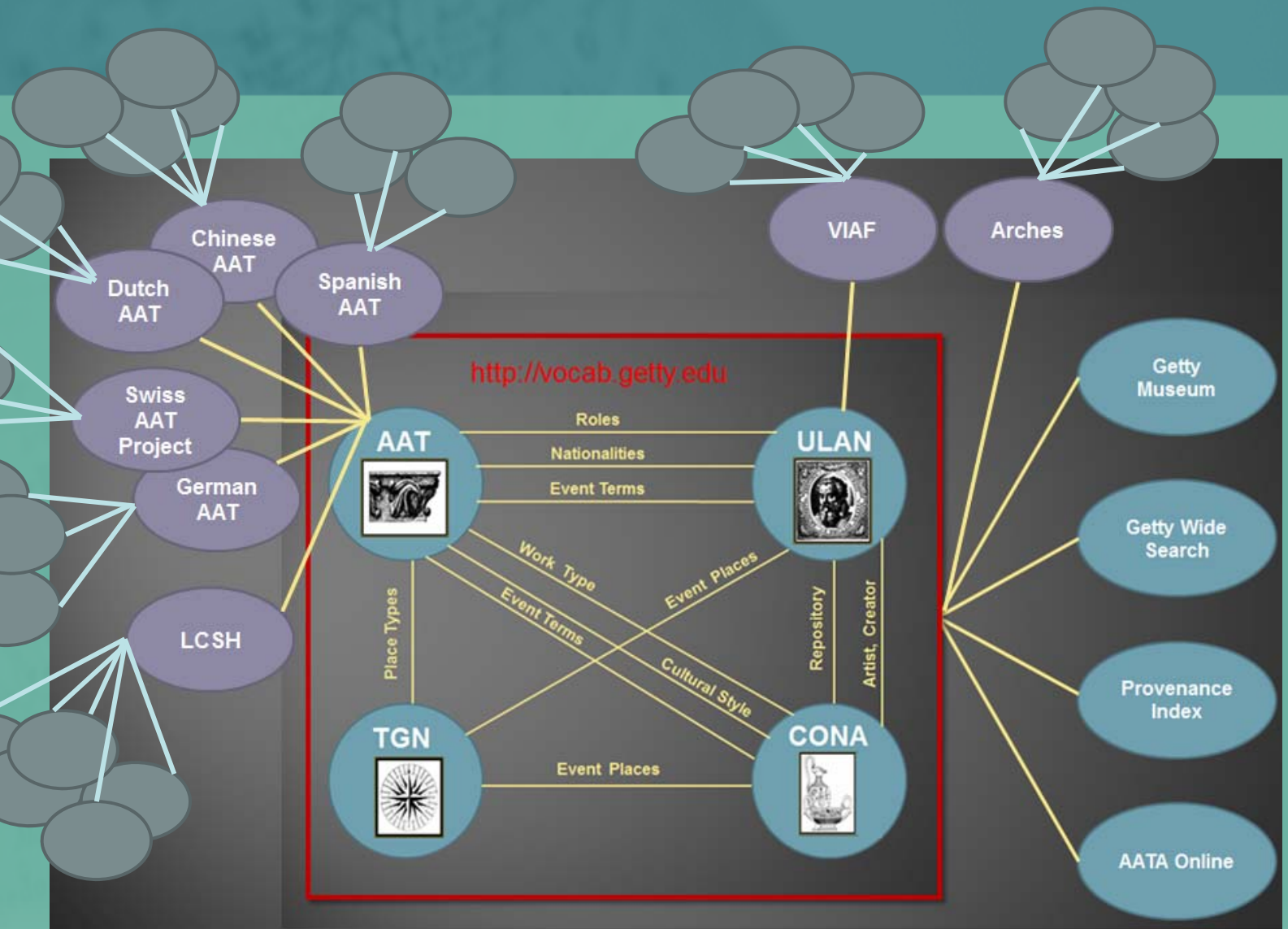
# Linking Possibilities: Our Partners

<http://vocab.getty.edu/aat/300198841>  
<http://vocab.getty.edu/aat/300198841>  
<http://vocab.getty.edu/aat/300198841>  
<http://vocab.getty.edu/aat/300198841>  
<http://vocab.getty.edu/aat/300198841>  
<http://vocab.getty.edu/aat/300198841>



# Linking Possibilities: Our Partner's Partners

<http://vocab.getty.edu/aat/300198841> <http://www.w3.org/1999/02/22-rdf-syntax-ns#Property>  
 <http://vocab.getty.edu/aat/300198841> <http://www.w3.org/1999/02/22-rdf-syntax-ns#Property>  
 <http://vocab.getty.edu/aat/300198841> <http://www.w3.org/1999/02/22-rdf-syntax-ns#Property>  
 <http://vocab.getty.edu/aat/300198841> <http://www.w3.org/1999/02/22-rdf-syntax-ns#Property>  
 <http://vocab.getty.edu/aat/300198841> <http://www.w3.org/1999/02/22-rdf-syntax-ns#Property>  
 <http://vocab.getty.edu/aat/300198841> <http://www.w3.org/1999/02/22-rdf-syntax-ns#Property>





# Resource Description Framework (RDF)

- One of the key ingredients of Linked Data.
- Provides a generic graph-based data model for describing things, including their relationships with other things.
- Three column format – known as a *triple* – *forms the fundamental building block of semantic representations.*
  - *Subject* - corresponds to the entity – a ‘thing’
  - *Predicates* – property of the entity - names, birth/death dates
  - *Objects* - Subjects in another triple OR Literal values
- Conceptualized anything (and everything) in the universe as a resource.
- Specifically supports evolution of schemas over time without requiring all the data consumers to be changed
- RDF has varying representations (e.g., XML, text, JSON)



# LOD Ontologies & Vocabularies

- Ontology
  - Used to capture knowledge about some domain of interest. An ontology describes the concepts in the domain and also the relationships that hold between those concepts.
- Vocabulary
  - A vocabulary in the sense of knowledge systems or ontologies are controlled vocabularies. They provide a way to organize knowledge for subsequent retrieval.
- Semantic Web Ontology
  - This is a formal specification of a shared conceptualization of the information to be published.
  - Examples of the vocabulary used in ontologies: class, object property, role, category, property, resource, etc.

# Uniform Resource Identifier (URI)

- Identifies a resource either by location (URL), or name (URN). It usually includes some type of unique and persistent identifier.
- URIs are not URLs but every URL is a URI
- The URI for a resource represented in an RDF statement is called the URI reference (URIref) for that graph node.
- URIs are used as ‘strong keys’ that are assigned to each of the nodes so that we can refer to them consistently across all the triples that describe their relationships.
- The URN that will be the base URI for AAT will be <http://vocab.getty.edu/aat>.

# Web Ontology Language (OWL)

- Developed by the W3C
- Built as an extension to RDFS
- Provides a precise vocabulary that enables more powerful reasoning and inference over relationships with which to knowledge can be represented.
- Can be seen as a social contract between a data provider and a data consumer.

# Simple Knowledge Organization System (SKOS)

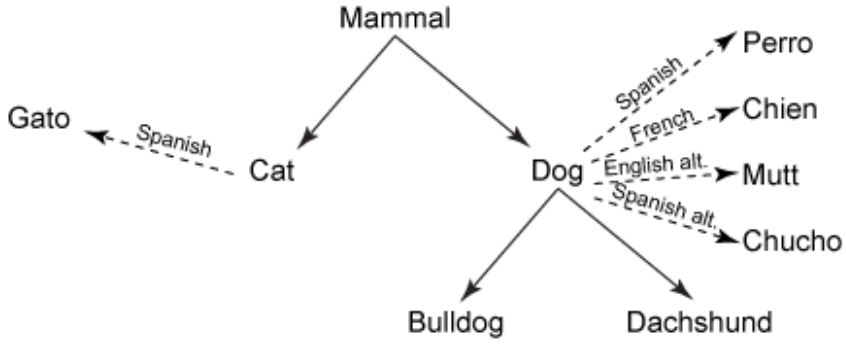
- A language designed for representation of thesauri, classification schemes, taxonomies, subject-heading systems, or any other type of structured controlled vocabulary.
- Based on RDF
- SKOS is currently developed within the W3C framework
- Can be used on its own, or in combination with other ontologies.



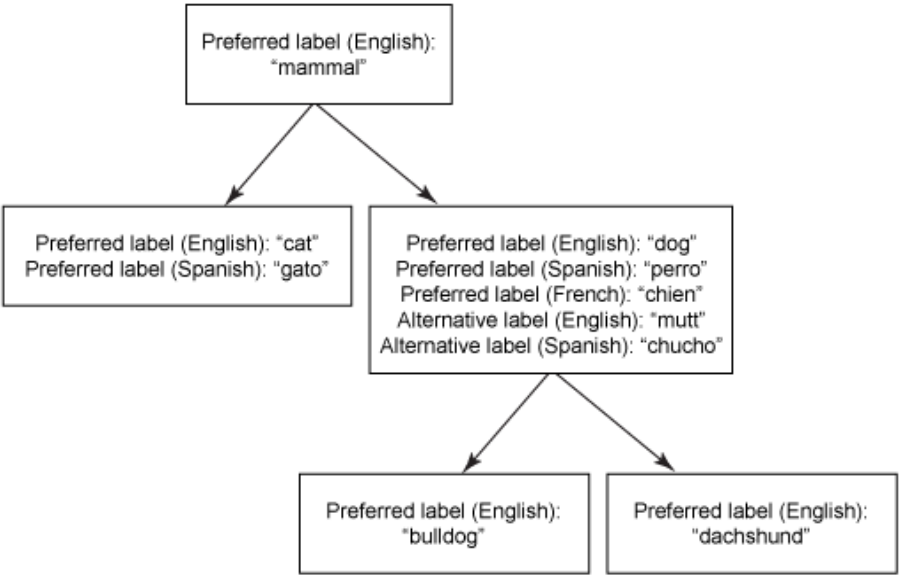
3.org/1999/02/22-rdf  
3.org/1999/02/22-rdf  
3.org/2000/01/rdf-scl  
3.org/2000/01/rdf-scl  
3.org/2000/01/rdf-scl  
3.org/2000/01/rdf-scl

# LOD: Simple SKOS example

## Sample concepts relationship in a pre-SKOS taxonomy



## Sample concepts relationship in SKOS



<http://  
<http://  
<http://  
<http://  
<http://  
<http://

# Triplestores

- Are purpose-built databases for the storage and retrieval of the type of unstructured information express in RDF triples that makes up the Semantic Web.
- Are not relational databases.
- Query language used with triplestores is typically SPARQL
- In addition to queries, triples can usually be imported/exported using RDF and other formats.
- Some triplestores store billions of triples.

# SPARQL Protocol RDF Query Language

- Was made a standard by the RDF Data Access Working Group (DAWG) of the W3C.
- Is considered one of the key technologies of the semantic web.
- Allows users to write unambiguous queries.
- SPARQL endpoint is a service that accepts SPARQL queries and returns results.
- Queries can be distributed to multiple SPARQL endpoints.
- Fundamental difference between SQL and SPARQL
  - Data exposed via SPARQL on *any* server can be queried by a SPARQL client.
  - Data from multiple places can be combined dynamically, as needed, to create new forms of information.

# Why do we care?

- The way data is being published on the web is currently in transition.
- A current trend in managing art information is to increasingly make data art, architecture, and cultural heritage objects available as Linked Open Data.
- This applies to the information directly describing the objects, but also the vocabularies used in the descriptions.
- For years now, the Getty Vocabulary team has been receiving legitimate requests to publish our thesauri as LOD.
- It is time to stop asking “why” and to start exploring “how”.



# Key values to Linked Open Data

- **Everyone** can access, reuse, enrich and share the data published in LOD format!
  - It is somewhat like Wikipedia and it makes “interworkability” more feasible.
- LOD disambiguates your search. In other words it eliminates the noise you sometimes get in Google search. What you are seeking is more precise because of the way you tag the information you are converting to LOD.
- LOD connects you to all kinds of relevant information creating a playground for serendipity and it updates that information dynamically within the same web space.
- LOD is able to connect data from the Web that was not previously connected.



THE GETTY

---



Patricia Harpring  
Managing Editor  
Getty Vocabulary Program  
Getty Research Institute

1200 Getty Center Drive  
Los Angeles, CA 90049

[pharpring@getty.edu](mailto:pharpring@getty.edu)

Thanks to Joan Cobb, IT Specialist Project Manager,  
Information Technology Services, J. Paul Getty Trust

# The Getty Vocabularies

Discover, link, access, retrieve, research, catalogue, index  
Explore art, architecture, cultural heritage, conservation, archaeology, and beyond

## History of the Getty vocabularies:

- The AAT, ULAN, and TGN were begun in the mid-1980s
  - To meet the needs of the Getty and outside art museum, visual resources, archives, and art library communities for authoritative vocabularies to aid in the indexing and retrieval of art information
  - Each was conceived and constructed differently, with the AAT originally located in Williamstown, Massachusetts
  - Data structure, editorial rules, systems, management of AAT, TGN, and ULAN were united in 1995 in Los Angeles
  - Analysis for CONA was begun in 2005
- Even so, we are “standing on the shoulders of giants”
  - Original work on controlled vocabularies for art began with International Committee for the History of Art (CIHA), and the TAU (Thesaurus Artis Universalis) committee, Center for the Advanced Study in the Visual Arts (CASVA) at the National Gallery of Art, Washington, as well as dozens of talented visionaries, analysts, programmers, information scientists, managers, and editors at the Getty (AHIP, GII, and now the Vocabulary Program at the Getty Research Institute), with dedicated contributors and users worldwide.