



Choose Model Contents

What should the model contain?

- | | | | |
|--|--|--|---|
| 
EF Designer
from
database | 
Empty EF
Designer
model | 
Empty Code
First model | 
Code First
from
database |
|--|--|--|---|

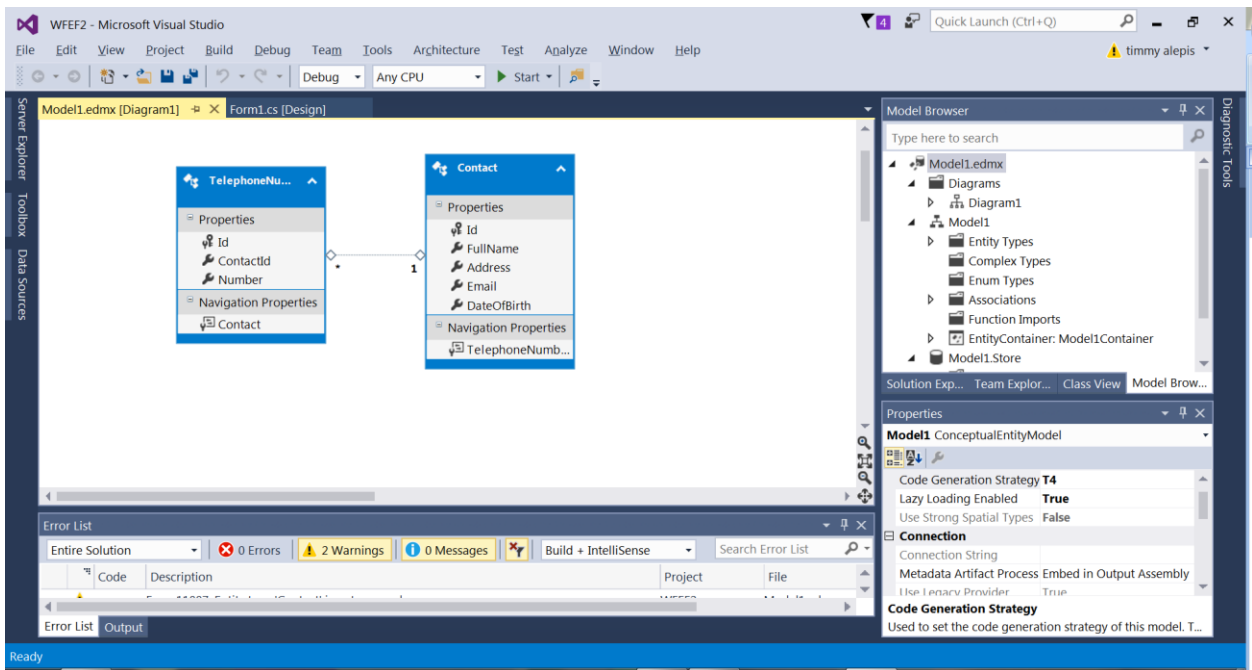
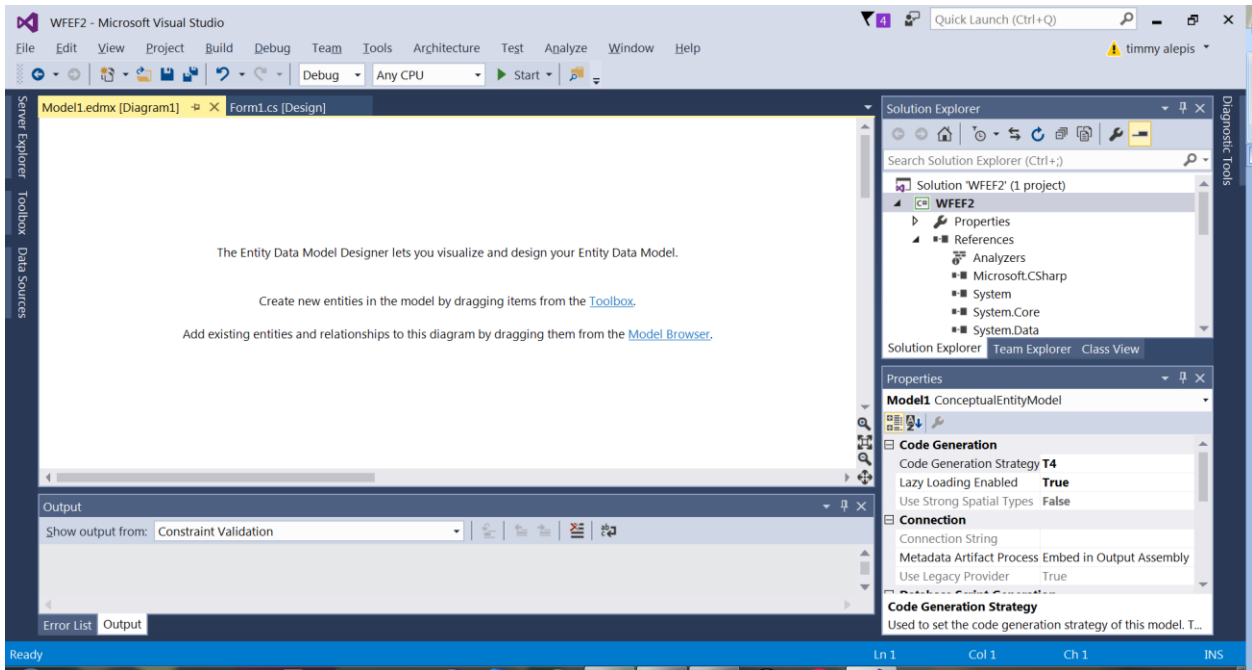
Creates an empty model in the EF Designer as a starting point for visually designing your model. Later, you can generate a database from your model. The classes your application will interact with are generated from the model.

< Previous

Next >

Finish

Cancel



TelephoneNu...

- Properties
 - Id
 - ContactId
 - Number
- Navigation Properties
 - Contact

Contact

- Properties
 - Id
 - FullName
 - Address
 - Email
 - DateOfBirth
- Navigation Properties
 - TelephoneNumb...



- Model1.edr
 - Diagram
 - Model1
 - Entit
 - Corr

- Add New
- Diagram
- Zoom
- Grid
- Scalar Property Format
- Select All
- Validate
- Update Model from Database...
- Generate Database from Model...
- Add Code Generation Item...
- Mapping Details
- Model Browser
- Properties Alt+Enter

0 Errors | 2 Warnings | 0 Messages | Build + IntelliSense

Description

Connection Properties

?

×

Enter information to connect to the selected data source or click "Change" to choose a different data source and/or provider.

Data source:

Microsoft SQL Server (SqlClient)

Change...

Server name:

(localdb)\MSSQLLocalDB

Refresh

Log on to the server

Authentication: Windows Authentication

User name:

Password:

Save my password

Connect to a database

Select or enter a database name:

medinfo2

Attach a database file:

Browse...

Logical name:

Advanced...

Test Connection

OK

Cancel



Choose Your Data Connection

Which data connection should your application use to connect to the database?

timmy-pc.master.dbo

New Connection...

This connection string appears to contain sensitive data (for example, a password) that is required to connect to the database. Storing sensitive data in the connection string can be a security risk. Do you want to include this sensitive data in the connection string?

- No, exclude sensitive data from the connection string. I will set it in my application code.
- Yes, include the sensitive data in the connection string.

Connection string:

```
metadata=res:/*/*Model1.csdl|res:/*/*Model1.ssdl|
res:/*/*Model1.msl;provider=System.Data.SqlClient;provider connection string="data source=timmy-
pc;integrated security=True;MultipleActiveResultSets=True;App=EntityFramework"
```

Save connection settings in App.Config as:

Model1Container

< Previous

Next >

Finish

Cancel



Choose Your Version

Which version of Entity Framework do you want to use?

- Entity Framework 6.x
- Entity Framework 5.0

i It is also possible to install and use other versions of Entity Framework.
[Learn more about this](#)

< Previous

Next >

Finish

Cancel



Summary and Settings

Save DDL As:

DDL

```
-----  
-- Entity Designer DDL Script for SQL Server 2005, 2008, 2012 and Azure  
-----  
-- Date Created: 03/01/2016 16:24:05  
-- Generated from EDMX file: E:\dropbox\VS projects\MyDesktopPC  
  \VS2015\WFEF2\WFEF2\Model1.edmx  
-----  
  
SET QUOTED_IDENTIFIER OFF;  
GO  
USE [master];  
GO  
IF SCHEMA_ID(N'dbo') IS NULL EXECUTE(N'CREATE SCHEMA [dbo]');  
GO  
  
-----  
-- Dropping existing FOREIGN KEY constraints  
-----
```

< Previous

Next >

Finish

Cancel

